



**ASTRO
ATS-12
TABBER**



PARTS MANUAL

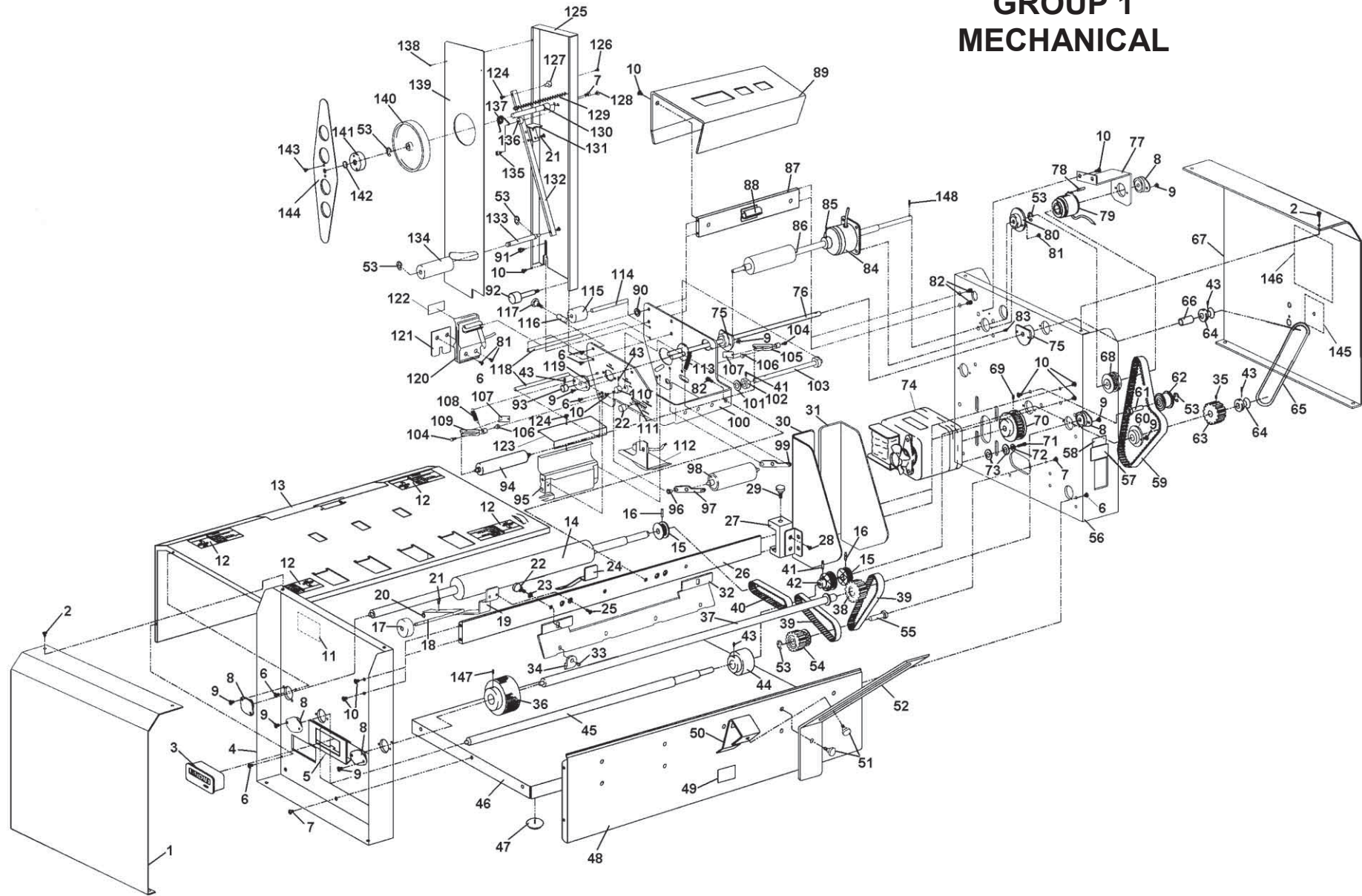
This manual is intended solely for the use and information of Astro Machine Corp., its designated agents, customers, and their employees. The information in this guide was obtained from several different sources that are deemed reliable by all industry standards. To the best of our knowledge, that information is accurate in all respects. However, neither Astro Machine Corp. nor any of its agents or employees shall be responsible for any inaccuracies contained herein.

All rights reserved. No part of this book may be reproduced or transmitted in any form or by any means, electronic or mechanical, including photocopying, recording, or any information storage and retrieval system, without permission in writing from the publisher.

Table of Contents

GROUP 1 – Mechanical	1
GROUP 2 – Electrical	4
GROUP 3 – Applicator Head	6
GROUP 4 – Reel Support	7
GROUP 5 – Labels and Optional Accessories	8
INDEX	9

GROUP 1 MECHANICAL



KEY	PART NO.	DESCRIPTION	QTY.
1.	62-200-06	SIDE COVER, L/H	1
2.	123-1135	SCREW, 6-32 x 1/4 TRUSS HD. PH SS	8
3.	123-1035	COUNTER, NON-RESETTABLE	1
4.	62-200-05	FRAME, L/H SIDE	1
5.	62-300-116	COUNTER BRACKET SPRING	1
6.	123-0612	SCREW, 6-32 x 1/4 PHILLIPS PAN HD.	10
7.	123-0024	SCREW, 10-32 x 3/8 PH TRUSS HD.	7
8.	90-103-52	BALL BEARING ASSEMBLY	6
9.	123-0275	SCREW, 6-32 x 1/4 OVAL CSK PH	18
10.	123-0017	SCREW, 10-32 x 1/4 PH TRUSS HD.	13
11.	123-1527	DECAL, WARNING EXP. FEED ROLLER	1
12.	123-1112	DECAL, CAUTION EXPOSED ROLLER	4
13.	62-100-08	CENTER PLATE WELDMENT	1
14.	62-106-02	ROLLER, FRONT FEED	1
15.	71-122-06	PULLEY, 12 XL	2
16.	123-0036	ROLL PIN, 3/32 x 5/8	2
17.	62-100-48	DUAL TRACK ROLLER ASSEMBLY (PARTS 17-21 BELOW INCLUDED IN ASSEMBLY)	1
17.	62-100-37	ROLLER, RETAINER SPRING	2
18.	62-100-36	SHAFT, TRACK ROLLER	2
19.	62-100-32	RETAINER SPRING WELDMENT	2
20.	123-0080	TRUARC, #5133-18	4
21.	123-0461	SCREW, 6-32 x 3/16 RND HD. PH SS	2
17*	62-104-00 *(OPTIONAL)	QUAD TRACK ROLLER SPRING ASSEMBLY THIS IS PART OF THE ATS-12TK TANDEM KIT USED WHEN OPERATING TWO TABBERS IN TANDEM (PARTS 17-21 BELOW INCLUDED IN ASSEMBLY)	1
17.*	62-100-37	ROLLER, RETAINER SPRING	4
18.*	62-100-36	SHAFT, TRACK ROLLER	2
19.*	62-104-01	TRACK ROLLER SPRING WELDMENT	2
20.*	123-0080	TRUARC, #5133-18	8
21.*	123-0461	SCREW, 6-32 x 3/16 RND HD. PH SS	4
22.	62-312-10	KNOB ASSEMBLY, METERING BRACKET	3
23.	123-0148	WASHER, 7/16 OD x 0.200 ID x 1/32	2
24.	62-300-39	SPRING, RETAINER	1
25.	123-0002	SCREW, 10-32 x 3/8 PH UNDERCUT SS	4
26.	62-100-30	BEAM, REAR SUPPORT	1
27.	62-100-31	BLOCK, SIDE GUIDE	2
28.	123-0878	SCREW, 10-24 x 1/4 RND HD. PH	4
29.	62-100-29	KNOB ASSEMBLY	2
30.	62-105-10	SIDE GUIDE ASSEMBLY- L/H	1
31.	62-105-11	SIDE GUIDE ASSEMBLY- R/H	1
32.	62-100-38	METERING BRACKET	1
33.	123-0683	SCREW, 6-32 x 5/16 UNDERCUT PH SS	5

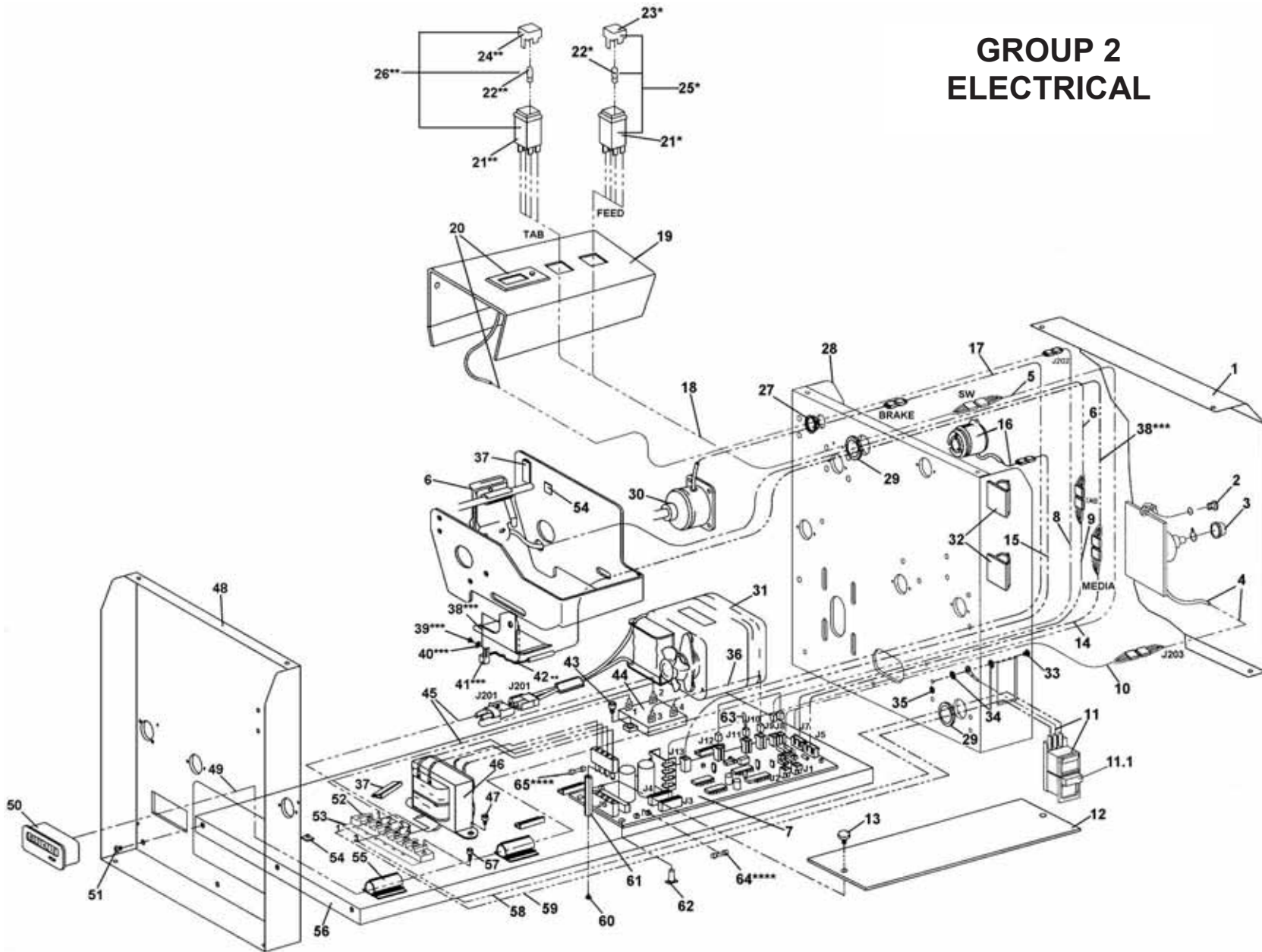
KEY	PART NO.	DESCRIPTION	QTY.
34.	90-103-09	METERING SEGMENT	4
35.	123-0298	SET SCREW, 10-24 x 3/16 SOC. PT	1
36.	90-102-21	FEED ROLLER ASSEMBLY	4
37.	62-102-01	REAR FEED SHAFT SUBASSEMBLY	1
38.	62-101-03	PULLEY, FEED ROLLER SHAFT ASSEMBLY	1
39.	123-0138	BELT, TIMING 90XL029U	2
40.	123-0576	BELT, 80XL031, BLACK	1
41.	123-0695	SPRING PIN, 3/32 x 1/2	3
42.	62-102-11	PULLEY, 14XL GROOVES	1
43.	123-0322	SET SCREW, 8-32 x 1/4 SOC.	8
44.	56-101-17	RUBBER FEED ROLLER ASSEMBLY	4
45.	62-102-08	DRIVE SHAFT	1
46.	62-200-07	MOTOR BASE	1
47.	123-0620	FOOT, RUBBER	4
48.	62-100-10	REAR CLOSURE WELDMENT	1
49.	20-100-63	LABEL, CAUTION	1
50.	90-102-13	REAR MEDIA SUPPORT WELDMENT	2
51.	62-100-50	KNOB, METERING BRACKET	4
52.	62-110-01	PAPER STACK REST	2
53.	123-0081	TRUARC, #10000025ST	6
54.	90-107-05	IDLER PULLEY ASSEMBLY	1
55.	90-107-06	IDLER PULLEY STUD ASSEMBLY	1
56.	62-200-04	FRAME, R/H SIDE	1
57.	27-550-03	LABEL, FUSE	1
58.	123-1890	DECAL, CAUTION POWER DISCONNECT	1
59.	123-0873	BELT, 160XL037 BLACK	1
60.	90-101-12	BEARING HOUSING ASSEMBLY, CLUTCH	1
61.	62-103-47	STUD, TENSIONER	1
62.	62-100-42	ROLLER ASSEMBLY, TENSIONER	1
63.	62-102-19	PULLEY, 20 XL GROOVES	1
64.	90-103-45	SPOOL, PAPER TAKE-UP	2
65.	123-0906	O-RING, 0.125 x 11.75	1
66.	62-109-05	SLEEVE	1
67.	62-200-35	SIDE COVER, R/H	1
68.	62-103-13	CLUTCH COUPLING ASSEMBLY	1
69.	123-0709	SET SCREW, 10-24 x 3/8 CUP PT. SOC.	1
70.	62-100-43	MOTOR PULLEY, 26-TEETH	1
71.	123-0004	SCREW, 10-32 x 5/8 SOC. HD.	4
72.	123-0068	WASHER, PLAIN #10 3/16	4
73.	123-0311	WASHER, PLASTIC 9/32 x 3/4 x 1/16	8
74.	62-500-15	MOTOR ASSEMBLY	1
75.	62-109-07A	HOUSING, BALL BEARING ASSEMBLY	2
76.	62-109-01	PAPER TAKE-UP SHAFT WELDMENT	1

KEY	PART NO.	DESCRIPTION	QTY.
77.	62-103-08	CLUTCH SHAFT SUPPORT	1
78.	123-0018	ROLL PIN 1/8 x 3/4, BLACK	1
79.	62-800-14	CLUTCH ASSEMBLY	1
..80.	62-100-46	BALL BEARING HOUSING ASSEMBLY	1
..81.	123-0675	SCREW, 6-32 x 3/16 FH UNDERCUT PH SS	4
..82.	123-0434	SCREW, 10-32 x 5/16 SOC. CAP	4
..83.	123-0876	SCREW, 1/4-28 x 1/4 SOC. CAP HD.	4
..84.	62-800-13	BRAKE ASSEMBLY	1
..85.	123-0757	SET SCREW, 6-32 x 1/4 STD. CUP PT	1
..86.	62-103-01	TAB PULL ROLLER ASSEMBLY	1
87.	62-100-28	APPLICATOR HEAD SUPPORT	1
88.	123-0609	CABLE HOLDER, 1/4 IN	6
89.	62-200-19	COVER, HEAD SUPPORT	1
90.	62-307-10	SPACER, REEL GUIDE	1
91.	123-0486	SCREW, 10-32 x 7/16 SOC. CAP	1
92.	62-307-11	THUMBSCREW, REEL GUIDE	1
93.	62-312-07	KNOB, TAB ADVANCE	1
94.	62-108-08	ROLLER, APPLICATOR HEAD	1
95.	62-308-04	TAB SEPARATOR WELDMENT	1
96.	62-108-09	PIN	2
97.	90-103-34	ARM ASSEMBLY - L/H	1
98.	62-108-10	ROLLER, PRESSURE RELEASE	1
99.	90-103-35	ARM ASSEMBLY - R/H	1
100.	62-208-01	APPLICATOR HEAD FRAME ASSEMBLY	1
101.	123-901	WASHER, #12 FLAT 1/4 x 9/16 x 0.062	2
102.	90-103-40	RELEASE - ECCENTRIC	2
103.	62-108-07	SHAFT, RELEASE ECCENTRIC	1
104.	123-0267	SCREW, 6-32 x 5/8 HEX HD. SS	2
105.	62-108-19	HOLDER ASSEMBLY, APPLIC. ROLLER - R/H	1
106.	62-308-11	STUD, APPLICATOR ROLLER	2
107.	62-308-32	SPRING, APPLICATOR ROLLER HOLDER	2
108.	62-108-18	SPRING	2
109.	62-108-20	HOLDER ASSEMBLY, APPLIC. ROLLER - L/H	1
110.	62-312-04	KNOB, TAB PRESSURE ON/OFF	1
111.	123-0114	WASHER, PLASTIC 3/16 x 7/16 x 1/32	1
112.	62-800-22	MEDIA SENSOR BRACKET ASSEMBLY	1
113.	62-108-30	SPRING, PRESSURE ROLLER	2
114.	62-308-25	GUIDE ROD, APPLICATOR HEAD	1

KEY	PART NO.	DESCRIPTION	QTY.
115.	62-108-14	ROLLER, TAB GUIDE	1
116.	62-108-13	GUIDE, TAB	1
117.	62-108-21	KNOB ASSEMBLY	1
118.	62-108-12	ROD, APPLICATOR HEAD	2
119.	90-102-28	HOUSING, BALL BEARING ASSEMBLY	1
120.	62-304-24U	TAB SENSOR SUBASSEMBLY	1
121.	62-108-15	SPRING, TAB GUIDE	1
122.	123-0702	LABEL, TAB ALIGNMENT	1
123.	62-308-30	SAFETY COVER, APPLICATOR HEAD	1
124.	123-0127	SCREW, 6-32 x 1/8 PAN HD. PH	2
125.	62-207-03	STAND, REEL	1
126.	123-0274	SCREW, 6-32 x 3/8 TRUSS HD. PH	1
127.	62-307-07	PIVOT, REEL	1
128.	123-0701	SCREW, 10-32 x 3/16 TRUSS HD. PH	1
129.	80-120-23	SPRING, REEL ARM	1
131.	62-307-23	LINK, REEL BRAKE SPRING	1
132.	62-307-02	ARM ASSEMBLY, REEL	1
133.	62-307-15	SHAFT, REEL GUIDE ROLLER	1
134.	90-106-11	GUIDE ROLLER	1
135.	123-1022	SCREW, 10-32 x 3/16 SOC. HD.	1
136.	62-307-06	SPACER, REEL	1
137.	90-106-07	TENSION SPRING	1
138.	123-0133	SCREW, 4-40 x 1/4 PH UNDERCUT	4
139.	62-207-09	FACE PLATE, REEL	1
140.	90-106-05	BRAKE WHEEL ASSEMBLY	1
141.	90-106-14	HUB, REEL	1
142.	123-0673	O-RING, SEE P/N 123-0621	1
143.	123-0125	SCREW, 8-32 x 3/16 BIND HD. PH	2
144.	62-207-14	SIDE GUIDE, REEL	1
145.	90-105-11	DECAL, SENSOR ADJ. SWITCH	1
146.	90-105-10	LABEL, LABEL SENSOR ADJUSTMENT	1
147.	123-1861	SCREW, 10-24 x 1/4 SOC. PT	4
148.	123-0369	SPRING PIN, 3/32 x 3/8	1
*	62-100-54	DROP TRAY, PLASTIC (<i>OPTIONAL ACCESSORY</i>)	1
*NOT SHOWN			

GROUP 1 MECHANICAL

GROUP 2 ELECTRICAL



KEY	PART NO.	DESCRIPTION	QTY.
1.	62-200-35	SIDE COVER, R/H	1
2.	123-0685	LED HOLDER	1
3.	62-312-16	KNOB ASSEMBLY, TAB SENSOR SWITCH	1
4.	62-800-02	SET-UP SWITCH ASSEMBLY	1
5.	62-800-16	WIRE HARNESS, SWITCHES, L/H	1
6.	62-304-24	TAB SENSOR ASSEMBLY, W350	1
7.	62-800-00	CONTROLLER PC BOARD	1
8.	62-800-09	WIRE HARNESS, COUNTER EXTENSION	1
9.	62-800-32	WIRE HARNESS, TAB SENSOR EXTENSION	1
10.	62-800-03	WIRE HARNESS, SET-UP SWITCH	1
11.	21-500-04	POWER INLET- GROUND	1
11.1	123-1015	FUSE, 2A, 250V	1
12.	62-300-60	SHIELD, PC BOARD	1
13.	62-300-61	KNOB ASSEMBLY, PC BOARD SHIELD	1
14.	62-800-31	WIRE HARNESS, MEDIA SENSOR EXTENSION	1
15.	62-800-18	WIRE HARNESS, CLUTCH EXTENSION	1
16.	62-800-14	CLUTCH ASSEMBLY	1
17.	62-800-17	WIRE HARNESS, BRAKE EXTENSION	1
18.	62-800-15	WIRE HARNESS EXT, SWITCHES	1
19.	62-200-19	COVER, HEAD SUPPORT	1
20.	62-500-08	COUNTER ASSEMBLY	1
21.	123-0940	SWITCH	1
22.	123-0941	LIGHT BULB FOR SWITCH	1
23.	123-0930	CAP, GREEN	1
24.	123-0929	CAP, WHITE	1
25.*	62-800-28	SWITCH ASSEMBLY, FEED (GREEN)	1
26.**	62-800-29	SWITCH ASSEMBLY, TAB (WHITE)	1
27.	123-0684	SNAP-IN BUSHING, 0.500 O.D.	1
28.	62-200-04	FRAME, R/H SIDE	1
29.	123-1984	GROMMET, RUBBER	2
30.	62-800-30	BRAKE ASSEMBLY	1
31.	62-500-15	MOTOR ASSEMBLY	1
32.	123-0608	CABLE HOLDER, 1/2 IN	2
33.	123-0017	SCREW, 10-32 x 1/4 TRUSS HD. PH	1

KEY	PART NO.	DESCRIPTION	QTY.
34.	123-0237	STAR WASHER, #10 EXTERNAL	2
35.	123-1132	LABEL, GROUND MACHINE	1
36.	62-800-19	WIRE HARNESS, RELAY	1
37.	123-0607	CLAMP, FLAT CABLE	3
38.***	62-800-22	MEDIA SENSOR BRACKET ASSEMBLY	1
39.	123-0978	SCREW, 4-40 x 3/16 PH PAN HD. SS	1
40.	123-0252	STAR WASHER, #6 EXTERNAL	1
41.	62-800-12	WIRE HARNESS, MEDIA SENSOR	1
42.	123-0113	TIES, PLASTIC	1
43.	123-0778	SCREW, 8-32 x 3/8 SOC. HD.	2
44.	123-0831	AC RELAY, SOLID STATE	1
45.	62-800-04	WIRE HARNESS, MOTOR	1
46.	62-800-01	TRANSFORMER, ASSEMBLY	1
47.	123-0434	SCREW, 10-32 x 5/16 SOC. CAP	2
48.	62-200-05	FRAME, L/H SIDE	1
49.	62-800-34	WIRE HARNESS, NON-RESETTABLE COUNTER	1
50.	123-1035	COUNTER, NON-RESETTABLE	1
51.	123-0024	SCREW, 10-32 x 3/8 PH TRUSS HD.	6
52.	63-500-26	TERMINAL BLOCK ASSEMBLY	1
53.	25-550-04	DECAL, TERMINAL BLOCK	1
54.	123-0945	CABLE TIE MOUNT	2
55.	123-0609	CABLE HOLDER, 1/4 IN	6
56.	62-200-07	MOTOR BASE	1
57.	123-1457	SCREW, 6-32 x 3/8 SOC. CAP	2
58.	62-250-04	WIRE HARNESS, TB/PWR SUP	1
59.	62-250-05	WIRE HARNESS, TB/PWR SUP	1
60.	123-0612	SCREW, 6-32 x 1/4 PHILLIPS PAN HD.	2
61.	62-300-62	STUD, PC BOARD SHIELD	2
62.	123-0426	SUPPORT, CIRCUIT BOARD	4
63.	62-250-06	WIRE HARNESS, JUMPER	1
64.****	123-0987	FUSE, 1A 250V 5 x 20mm #217001	1
65.****	123-0871	FUSE, 1/2A 5 x 20mm	1

* INCLUDES KEY 21, 22 AND 23

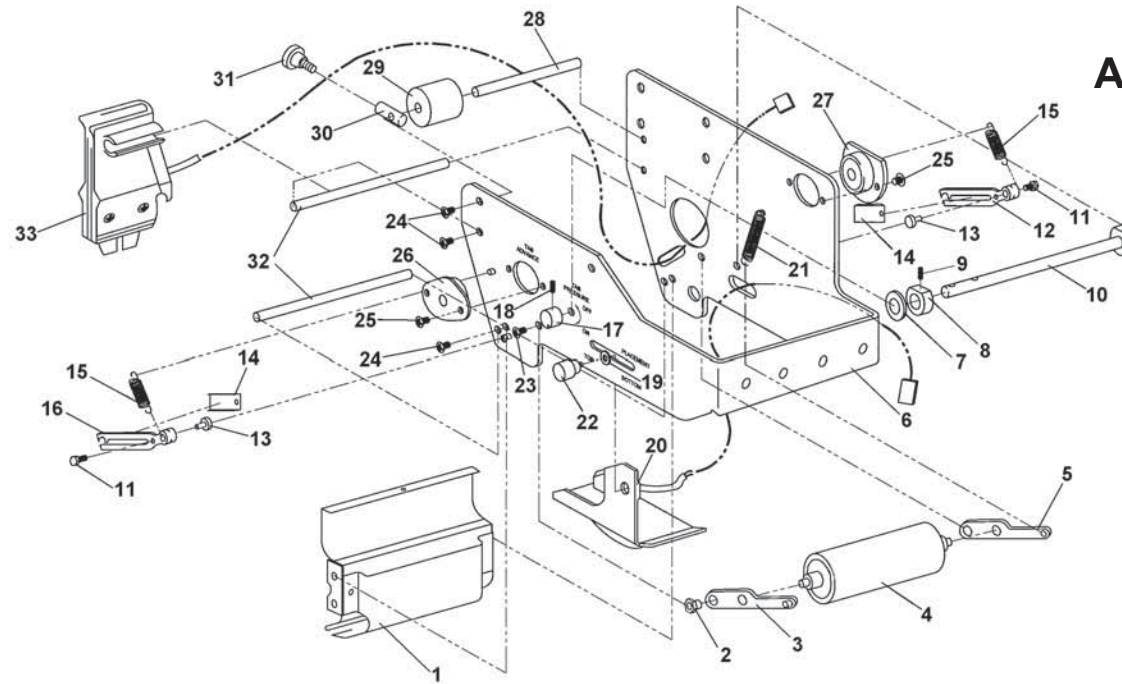
** INCLUDES KEY 21, 22 AND 24

*** INCLUDES KEY 39, 40 41 AND 42

****INCLUDED WITH P/N 62-800-00

GROUP 2 ELECTRICAL

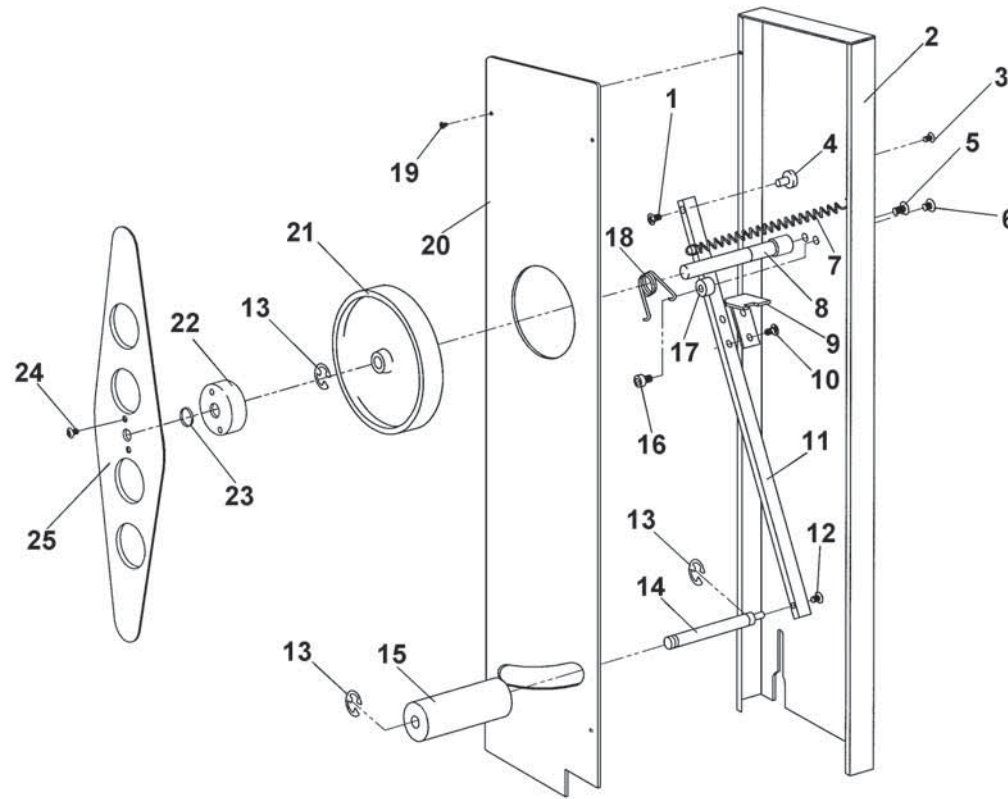
GROUP 3 APPLICATOR HEAD



KEY	PART NO.	DESCRIPTION	QTY.
1.	62-308-04	TAB SEPARATOR WELDMENT	1
2.	62-108-09	PIN	2
3.	90-103-34	ARM ASSEMBLY - L/H	1
4.	62-108-10	ROLLER, PRESSURE RELEASE	1
5.	90-103-35	ARM ASSEMBLY - R/H	1
6.	62-208-01	APPLICATOR HEAD FRAME ASSEMBLY	1
7.	123-0901	WASHER, #12 FLAT 1/4 x 9/16 x 0.062	2
8.	90-103-40	RELEASE - ECCENTRIC	2
9.	123-0695	SPRING PIN, 3/32 x 1/2	2
10.	62-108-07	SHAFT, RELEASE ECCENTRIC	1
11.	123-0267	SCREW, 6-32 x 5/8 HEX HD. SS	2
12.	62-108-19	HOLDER ASSEMBLY, APP ROLLER - R/H	1
13.	62-308-11	STUD, APPLICATOR ROLLER	2
14.	62-308-32	SPRING, APPLICATOR ROLLER HOLDER	2
15.	62-108-18	SPRING	2
16.	62-108-20	HOLDER ASSEMBLY, APP ROLLER - L/H	1
17.	62-312-04	KNOB, TAB PRESSURE ON/OFF	1

KEY	PART NO.	DESCRIPTION	QTY.
18.	123-0322	SET SCREW, 8-32 x 1/4 SOC.	1
19.	123-0114	WASHER, PLASTIC 3/16 x 7/16 x 1/32	1
20.	62-800-22	MEDIA SENSOR BRACKET ASSEMBLY	1
21.	62-108-30	SPRING, PRESSURE ROLLER	2
22.	62-312-10	KNOB ASSY., METERING BRACKET	1
23.	123-0017	SCREW, 10-32 x 1/4 PH TRUSS HD.	2
24.	123-0612	SCREW, 6-32 x 1/4 PHILLIPS PAN HD.	8
25.	123-0275	SCREW, 6-32 x 1/4 OVAL CSK PH	4
26.	90-102-28	BALL BEARING HOUSING ASSEMBLY	1
27.	62-109-07A	BALL BEARING HOUSING ASSEMBLY	1
28.	62-308-25	GUIDE ROD, APPLICATOR HEAD	1
29.	62-108-14	ROLLER, TAB GUIDE	1
30.	62-108-13	GUIDE, TAB	1
31.	62-108-21	KNOB ASSEMBLY	1
32.	62-108-12	ROD, APPLICATOR HEAD	2
33.	62-304-24	TAB SENSOR ASSEMBLY	1

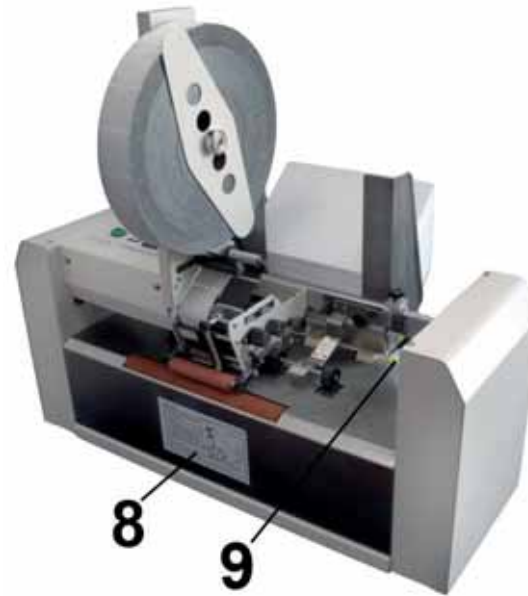
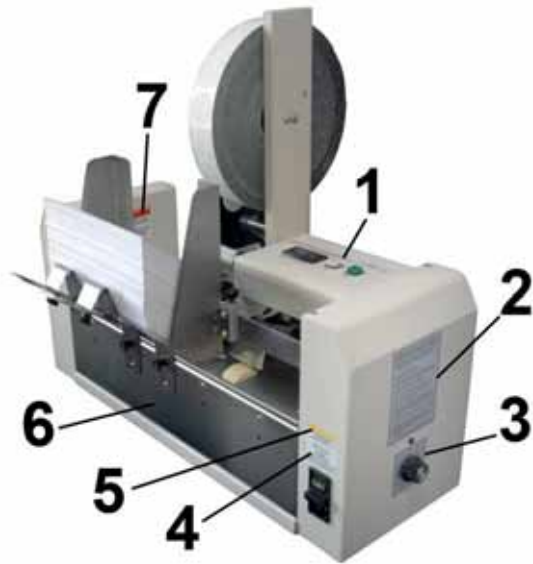
GROUP 4 REEL SUPPORT



KEY	PART NO.	DESCRIPTION	QTY.
1.	123-0127	SCREW, 6-32 x 1/8 PH PAN HD.	1
2.	62-207-03	STAND, REEL	1
3.	123-0274	SCREW, 6-32 x 3/8 PH TRUSS HD.	1
4.	62-307-07	PIVOT, REEL	1
5.	123-0024	SCREW, 10-32 x 3/8 PH TRUSS HD.	1
6.	123-0701	SCREW, 10-32 x 3/16 PH TRUSS HD.	1
7.	80-120-23	SPRING, REEL ARM	1
8.	62-307-05	STUD, SPOOL SUPPORT	1
9.	62-307-23	LINK, REEL BRAKE SPRING	1
10.	123-0461	SCREW, 6-32 x 3/16 PH RND HD. SS	2
11.	62-307-02	ARM ASSEMBLY, REEL	1
12.	123-0683	SCREW, 6-32 x 5/16 PH UNDERCUT SS	1
13.	123-0081	TRUARC, #10000025ST	3

KEY	PART NO.	DESCRIPTION	QTY.
14.	62-307-15	SHAFT, REEL GUIDE ROLLER	1
15.	90-106-11	GUIDE ROLLER	1
16.	123-1022	SCREW, 10-32 x 3/16 SOC. HD.	1
17.	62-307-06	SPACER, REEL	1
18.	90-106-07	TENSION SPRING	1
19.	123-0133	SCREW, 4-40 x 1/4 PH UNDERCUT	4
20.	62-207-09	FACE PLATE, REEL	1
21.	90-106-05	BRAKE WHEEL ASSEMBLY	1
22.	90-106-14	HUB, REEL	1
23.	123-0621	O-RING	1
24.	123-0125	SCREW, 8-32 x 3/16 BIND HD. PH	2
25.	62-207-14	SIDE GUIDE, REEL	1

GROUP 5 – LABELS AND OPTIONAL ACCESSORIES



LABELS

KEY	PART NO.	DESCRIPTION	QTY	KEY	PART NO.	DESCRIPTION	QTY
1.	62-550-10	DECAL "ATS-12"	1	6.	20-100-63	DECAL, CAUTION ELEC. SHOCK HAZARD	1
2.	90-105-10	DECAL, LABEL SENSOR ADJ.	1	7.	123-1527	DECAL WARNING EXPOSED FEED ROLLER	1
3.	90-105-11	DECAL, SENSOR ADJ. SWITCH	1	8.	123-0703	DIAGRAM, LABEL THREADING (T)	1
4.	27-550-03	DECAL, FUSE 2.0 A	1	9.	123-1112	LABEL, CAUTION EXPOSED ROLLER	4
5.	123-1890	DECAL, CAUTION POWER DISCONNECT	1	10.	NPN	SERIAL NUMBER LABEL	1

OPTIONAL ACCESSORIES

PART NO.	DESCRIPTION	QTY
62-100-54	DROP TRAY, PLASTIC	1
ATS-12TK	TANDEM KIT: INCLUDES TWO QUAD TRACK ROLLER ASSEMBLIES <i>(USED WHEN ALIGNING TWO TABBERS IN TANDEM FOR DUAL TABBING ON ONE PIECE OF MEDIA)</i>	1

INDEX

PART NO.	GROUP	KEY	PART NO.	GROUP	KEY	PART NO.	GROUP	KEY
123-0002	1	25	123-0612	3	24	21-500-04	2	11
123-0004	1	71	123-0620	1	47	25-550-04	2	53
123-0017	1	10	123-0673	1	142	27-550-03	1	57
123-0017	2	33	123-0673	4	23	27-550-03	5	4
123-0017	3	23	123-0675	1	81	56-101-17	1	44
123-0018	1	78	123-0683	1	33	62-100-08	1	13
123-0024	1	7	123-0683	4	12	62-100-10	1	48
123-0024	2	51	123-0684	2	27	62-100-28	1	87
123-0024	4	5	123-0685	2	2	62-100-29	1	29
123-0036	1	16	123-0695	1	41	62-100-30	1	26
123-0068	1	72	123-0695	3	9	62-100-31	1	27
123-0080	1	20	123-0701	1	128	62-100-32	1	19
123-0081	1	53	123-0701	4	6	62-100-36	1	18
123-0081	4	13	123-0702	1	122	62-100-37	1	17
123-0113	2	42	123-0703	5	8	62-100-38	1	32
123-0114	1	111	123-0709	1	69	62-100-42	1	62
123-0114	3	19	123-0757	1	85	62-100-43	1	70
123-0125	1	143	123-0778	2	43	62-100-46	1	80
123-0125	4	24	123-0831	2	44	62-100-48	1	17
123-0127	1	124	123-0871	2	65	62-100-50	1	51
123-0127	4	1	123-0873	1	59	62-100-54	1	--
123-0133	1	138	123-0876	1	83	62-100-54	5	--
123-0133	4	19	123-0878	1	28	62-101-03	1	38
123-0138	1	39	123-0901	1	101	62-102-01	1	37
123-0148	1	23	123-0901	3	7	62-102-08	1	45
123-0237	2	34	123-0906	1	65	62-102-11	1	42
123-0252	2	40	123-0929	2	24	62-102-19	1	63
123-0267	1	104	123-0930	2	23	62-103-01	1	86
123-0267	3	11	123-0940	2	21	62-103-08	1	77
123-0274	1	126	123-0941	2	22	62-103-13	1	68
123-0274	4	3	123-0945	2	54	62-103-47	1	61
123-0275	1	9	123-0978	2	39	62-104-00	1	17
123-0275	3	25	123-0987	2	64	62-104-01	1	19
123-0298	1	35	123-1015	1	11.1	62-105-10	1	30
123-0311	1	73	123-1022	1	135	62-105-11	1	31
123-0322	1	43	123-1022	4	16	62-106-02	1	14
123-0322	3	18	123-1035	1	3	62-108-07	1	103
123-0369	1	148	123-1035	2	50	62-108-07	3	10
123-0426	2	62	123-1112	1	12	62-108-08	1	94
123-0434	1	82	123-1112	5	9	62-108-09	1	96
123-0434	2	47	123-1132	2	35	62-108-09	3	2
123-0461	1	21	123-1135	1	2	62-108-10	1	98
123-0461	4	10	123-1457	2	57	62-108-10	3	4
123-0486	1	91	123-1527	1	11	62-108-12	1	118
123-0576	1	40	123-1527	5	7	62-108-12	3	32
123-0607	2	37	123-1861	1	147	62-108-13	1	116
123-0608	2	32	123-1890	1	58	62-108-13	3	30
123-0609	1	88	123-1890	5	5	62-108-14	1	115
123-0609	2	55	123-1984	2	29	62-108-14	3	29
123-0612	1	6	20-100-63	1	49	62-108-15	1	121
123-0612	2	60	20-100-63	5	6	62-108-18	1	108

INDEX

PART NO.	GROUP	KEY	PART NO.	GROUP	KEY	PART NO.	GROUP	KEY
62-108-18	3	15	62-307-10	1	90	80-120-23	1	129
62-108-19	1	105	62-307-11	1	92	80-120-23	4	7
62-108-19	3	12	62-307-15	1	133	90-101-12	1	60
62-108-20	1	109	62-307-15	4	14	90-102-13	1	50
62-108-20	3	16	62-307-23	1	131	90-102-21	1	36
62-108-21	1	117	62-307-23	4	9	90-102-28	1	119
62-108-21	3	31	62-308-04	1	95	90-102-28	3	26
62-108-30	1	113	62-308-04	3	1	90-103-09	1	34
62-108-30	3	21	62-308-11	1	106	90-103-34	1	97
62-109-01	1	76	62-308-11	3	13	90-103-34	3	3
62-109-05	1	66	62-308-25	1	114	90-103-35	1	99
62-109-07A	1	75	62-308-25	3	28	90-103-35	3	5
62-109-07A	3	27	62-308-30	1	123	90-103-40	1	102
62-110-01	1	52	62-308-32	1	107	90-103-40	3	8
62-200-04	1	56	62-308-32	3	14	90-103-45	1	64
62-200-04	2	28	62-312-04	1	110	90-103-52	1	8
62-200-05	1	4	62-312-04	3	17	90-105-10	1	146
62-200-05	2	48	62-312-07	1	93	90-105-10	1	146
62-200-06	1	1	62-312-10	1	22	90-105-11	5	2
62-200-07	1	46	62-312-10	3	22	90-105-11	5	3
62-200-07	2	56	62-312-16	2	3	90-106-05	1	140
62-200-19	1	89	62-500-08	2	20	90-106-05	4	21
62-200-19	2	19	62-500-15	1	74	90-106-07	1	137
62-200-35	1	67	62-500-15	2	31	90-106-07	4	18
62-200-35	2	1	62-550-10	5	1	90-106-11	1	134
62-207-03	1	125	62-800-00	2	7	90-106-11	4	15
62-207-03	4	2	62-800-01	2	46	90-106-14	1	141
62-207-09	1	139	62-800-02	2	4	90-106-14	4	22
62-207-09	4	20	62-800-03	2	10	90-107-05	1	54
62-207-14	1	144	62-800-04	2	45	90-107-06	1	55
62-207-14	4	25	62-800-09	2	8	ATS-12TK	5	--
62-208-01	1	100	62-800-12	2	41	NPN	5	10
62-208-01	3	6	62-800-13	1	84			
62-250-04	2	58	62-800-14	1	79			
62-250-05	2	59	62-800-14	2	16			
62-250-06	2	63	62-800-15	2	18			
62-300-116	1	5	62-800-16	2	5			
62-300-39	1	24	62-800-17	2	17			
62-300-60	2	12	62-800-18	2	15			
62-300-61	2	13	62-800-19	2	36			
62-300-62	2	61	62-800-22	1	112			
62-304-24	2	6	62-800-22	2	38			
62-304-24	3	33	62-800-22	3	20			
62-304-24U	1	120	62-800-28	2	25			
62-307-02	1	132	62-800-29	2	26			
62-307-02	4	11	62-800-30	2	30			
62-307-05	4	8	62-800-31	2	14			
62-307-06	1	136	62-800-32	2	9			
62-307-06	4	17	62-800-34	2	49			
62-307-07	1	127	63-500-26	2	52			
62-307-07	4	4	71-122-06	1	15			
