



ASTRO
CD-860
Conveyor Stacker



PARTS CATALOG

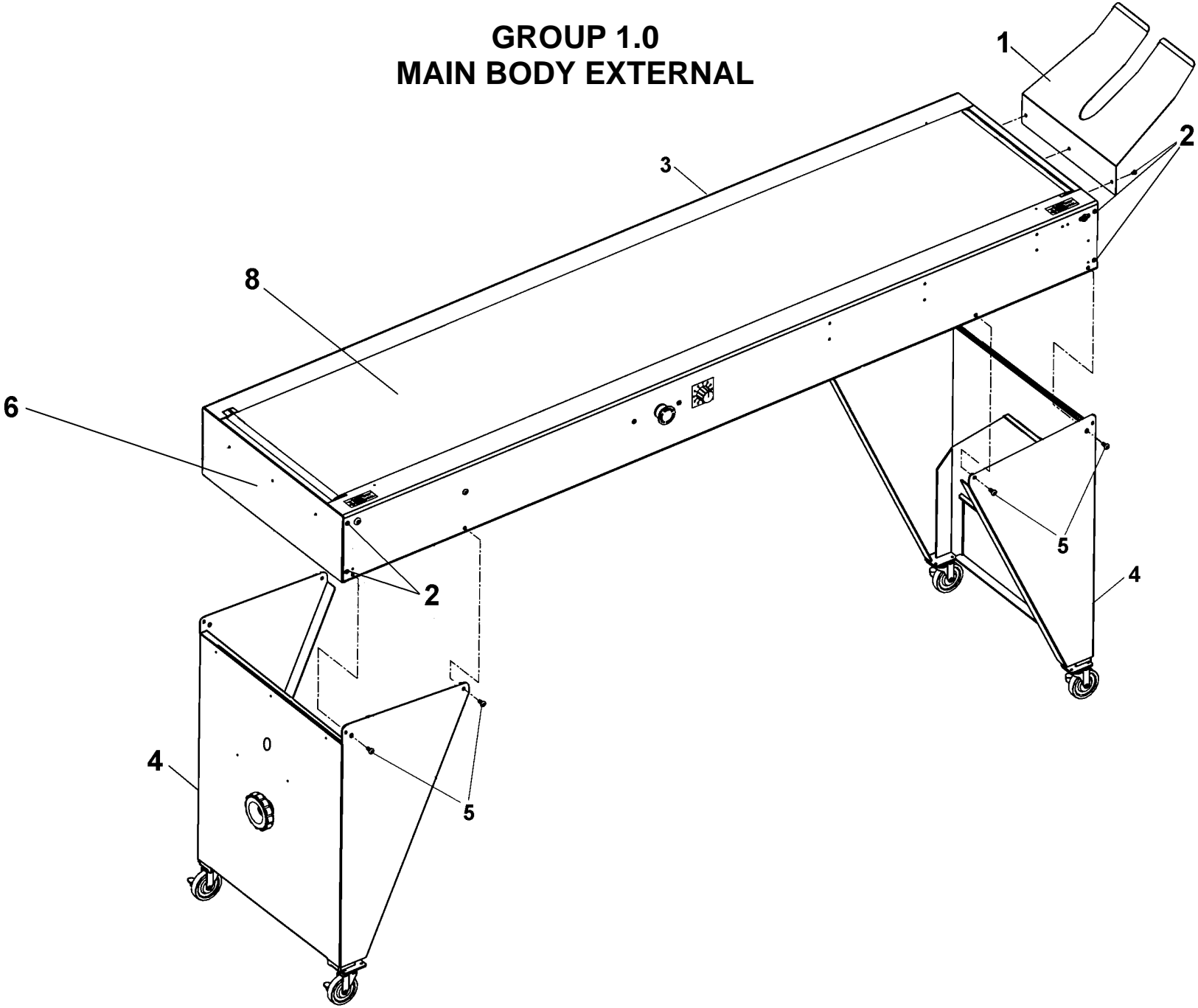
This manual is intended solely for the use and information of Astro Machine Corp., its designated agents, customers, and their employees. The information in this guide was obtained from several different sources that are deemed reliable by all industry standards. To the best of our knowledge, that information is accurate in all respects. However, neither Astro Machine Corp. nor any of its agents or employees shall be responsible for any inaccuracies contained herein.

All rights reserved. No part of this book may be reproduced or transmitted in any form or by any means, electronic or mechanical, including photocopying, recording, or any information storage and retrieval system, without permission in writing from the publisher.

TABLE OF CONTENTS

GROUP	DESCRIPTION	PAGE
1.0	MAIN BODY – EXTERNAL	1
1.1	MAIN BODY – INTERNAL	3
1.2	MEDIA GUIDE	5
1.3	CONVEYOR SUPPORTS	6
2.0	ELECTRICAL HARDWARE	7
2.1	ELECTRICAL	9
3.0	DT-860R DROP TRAY R-L (OPTIONAL)	11
3.1	DT-860L DROP TRAY L-R (OPTIONAL)	12
3.2	GUIDE ROLLERS	13
4.0	DK-860 DRYER KIT (OPTIONAL)	14
INDEX		15

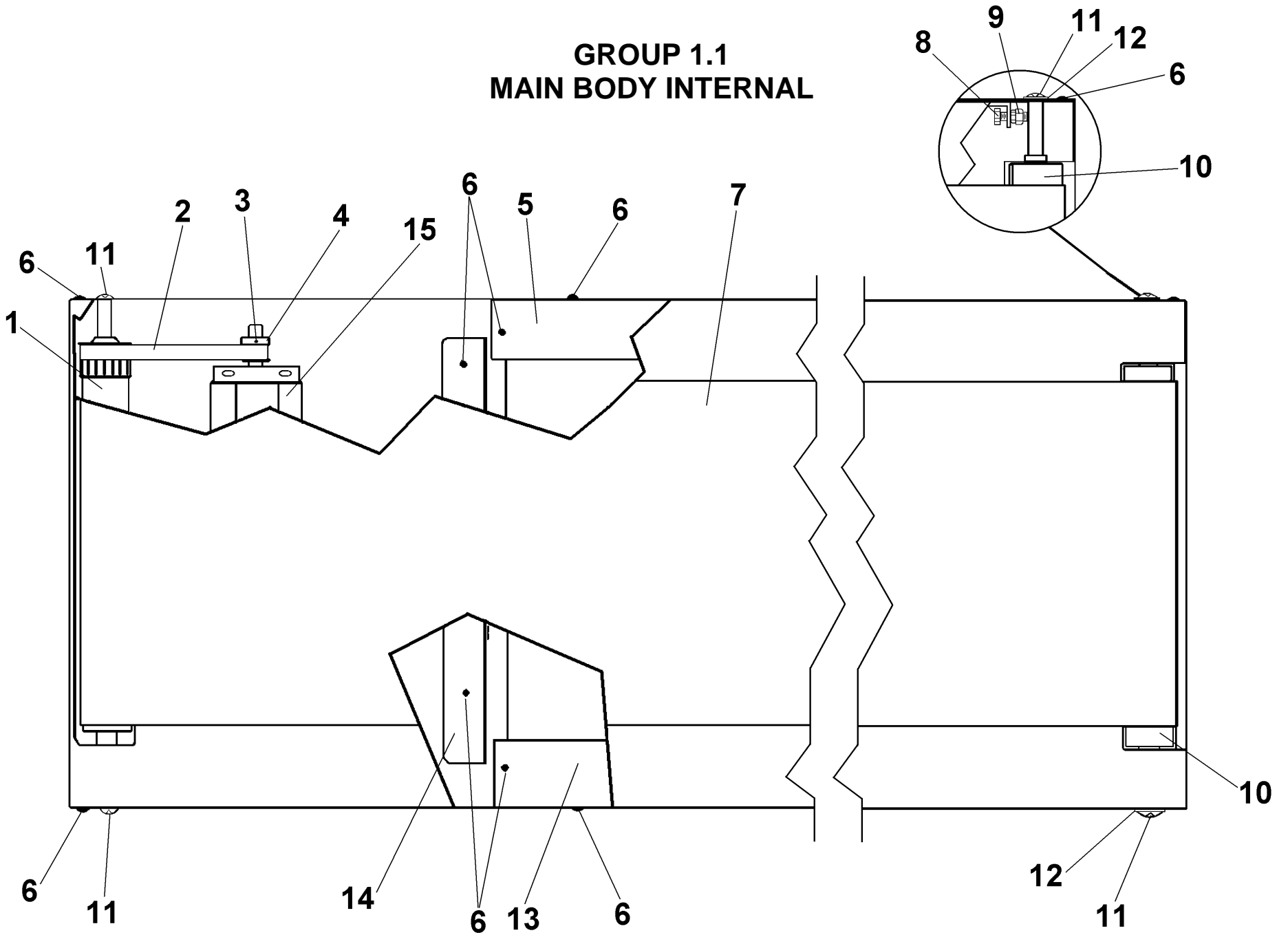
**GROUP 1.0
MAIN BODY EXTERNAL**



GROUP 1.0 MAIN BODY EXTERNAL

KEY	PART NO.	DESCRIPTION	QTY.
1.	25-250-39	RAMP	1
2.	123-0017	SCREW, 10-32 x 1/4" PH TRUSS HD.	11
3.	25-250-04	CONVEYOR BODY ASSEMBLY	1
4.	25-250-24	CONVEYOR SKIRT ASSEMBLY	2
5.	123-1442	SCREW, 1/4-20 x 1/2" BTN. HD. SOC. CAP HD.	8
6.	25-250-15	SIDE COVER, L/H	1
7.	25-250-12	SIDE COVER, R/H	1
8.	25-250-40	CONVEYOR BELT, SEMI-ELASTIC 12" W x 144.085" L	1

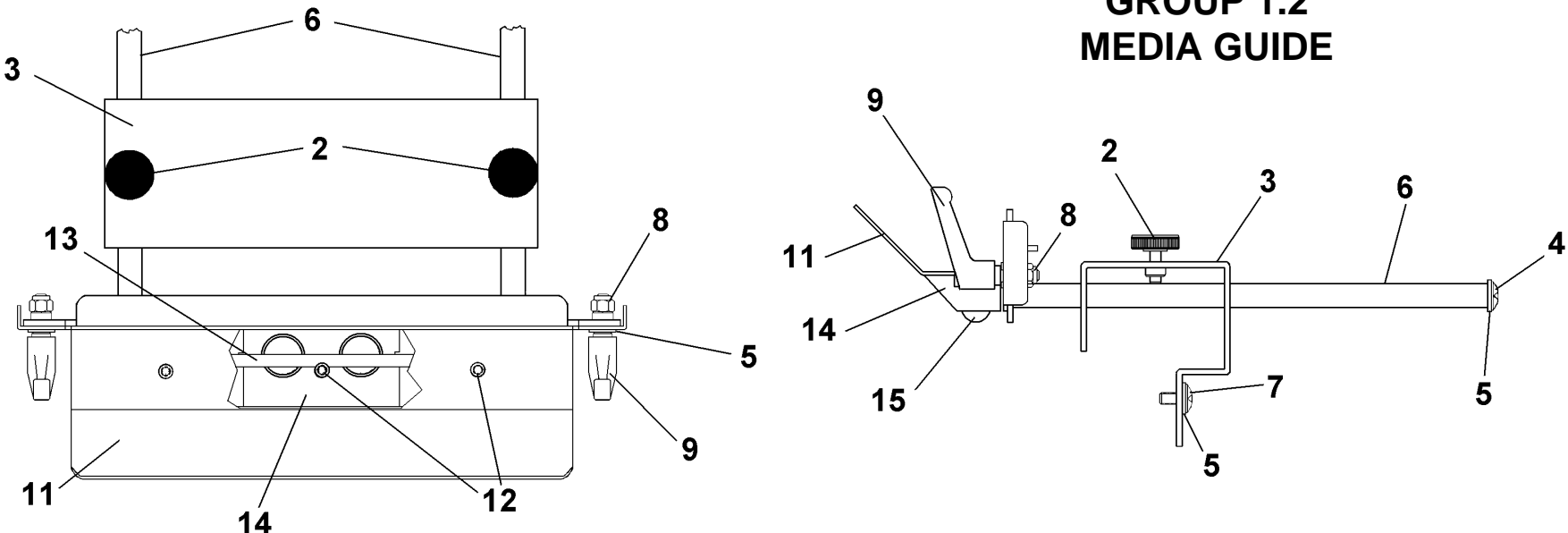
GROUP 1.1 MAIN BODY INTERNAL



GROUP 1.1 MAIN BODY INTERNAL

KEY	PART NO.	DESCRIPTION	QTY.
1.	25-251-03	DRIVE CONVEYOR ROLLER ASSEMBLY	1
2.	123-1702	BELT, TIMING 170XL043, 1/5 PITCH	1
3.	123-0298	SCREW, 10-24 x 3/16 CUP PT. SOC.	1
4.	65-303-01	MOTOR PULLEY ASSEMBLY, 14 GROOVES	1
5.	25-250-27	REAR WIRE COVER	1
6.	123-0017	SCREW, 10-32 x 1/4 PH TRUSS HD.	18
7.	25-250-40	BELT, ENDLESS SEMI-ELASTIC, 12" W x 144.085" L	1
8.	123-0400	SCREW, 1/4-20 x 1 HEX	2
9.	123-0054	NUT, 1/4-20	2
10.	25-251-05	CONVEYOR ROLLER ASSEMBLY	1
11.	123-2031	SCREW, 3/8-16 x 7/8 SOC. HD. CAP	4
12.	123-0567	WASHER, 5/16 ID	2
13.	25-250-28	WIRE COVER, FRONT	1
14.	25-250-29	BOTTOM CLOSURE	1
15.	32-500-12	MAIN DRIVE MOTOR	1

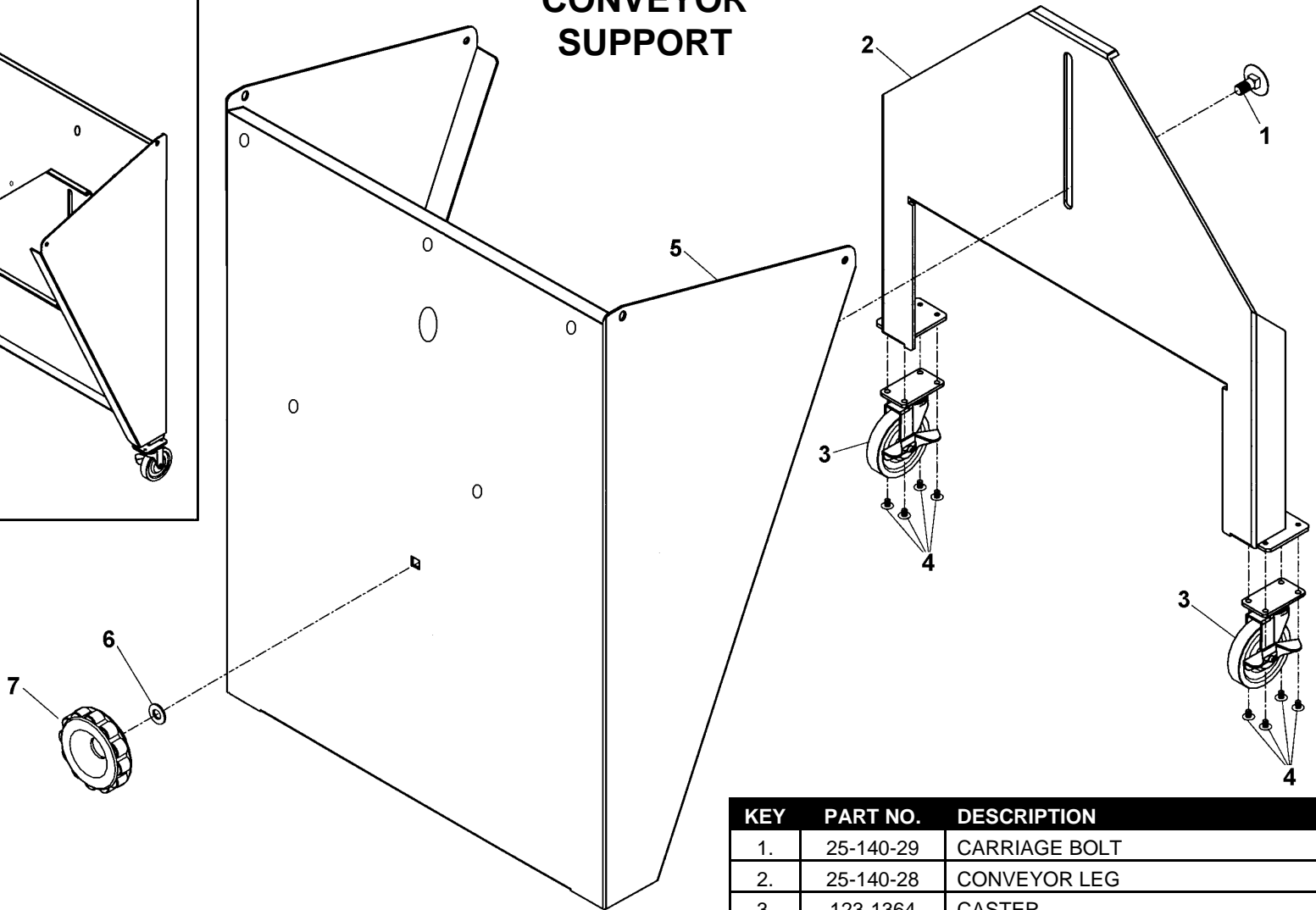
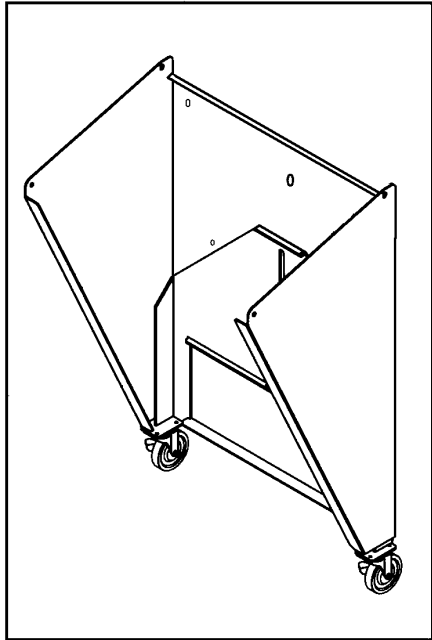
GROUP 1.2 MEDIA GUIDE



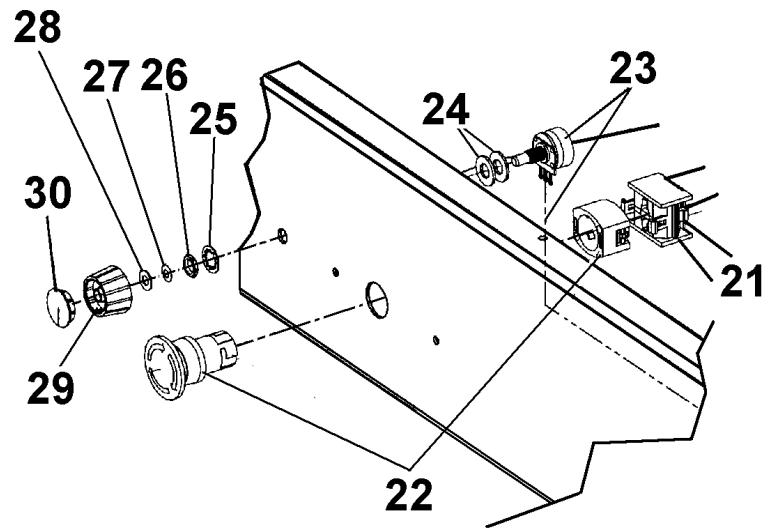
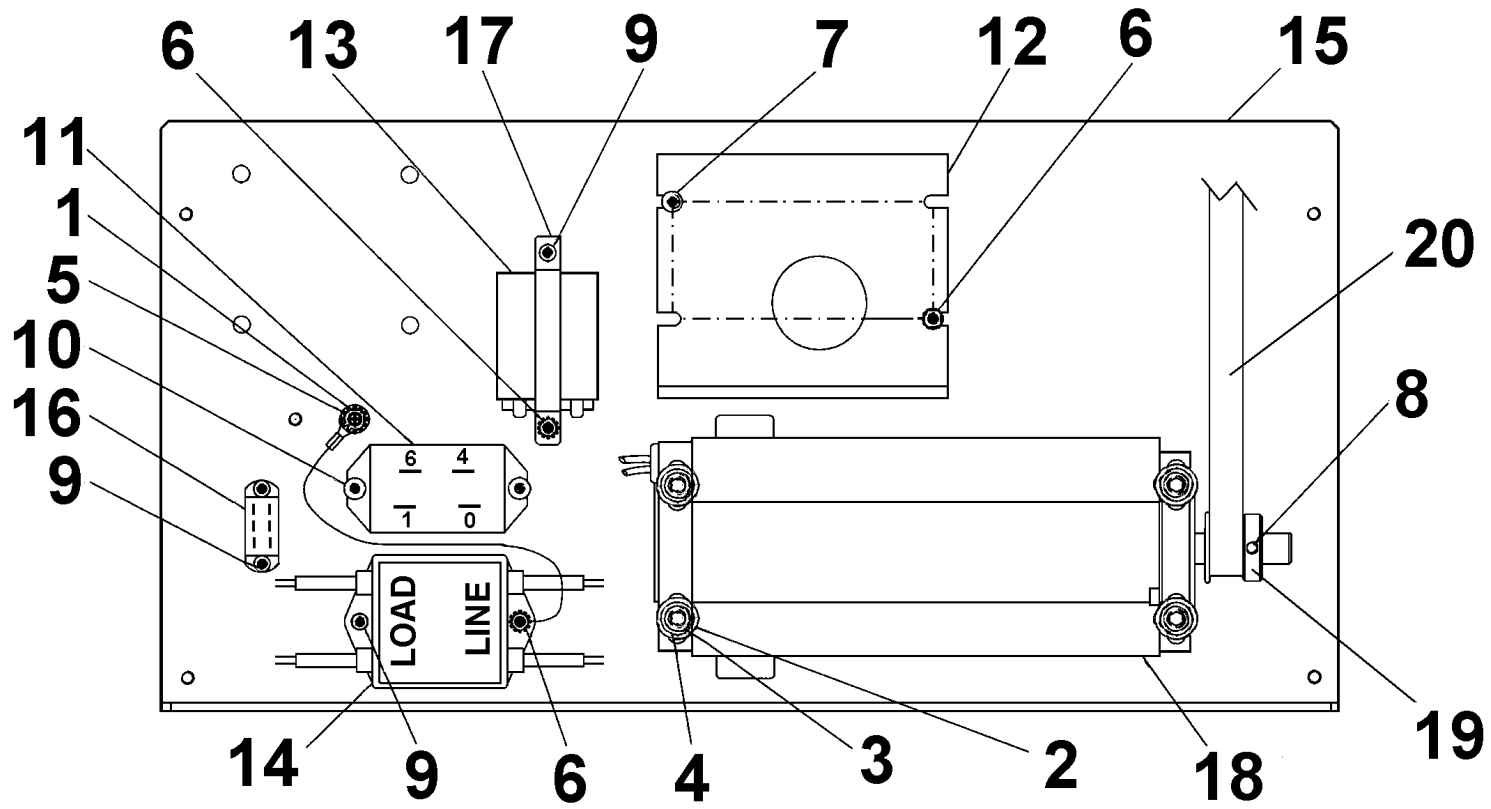
KEY	PART NO.	DESCRIPTION	QTY.
	25-253-01	MEDIA GUIDE ASSEMBLY (INCLUDES ALL PARTS LISTED BELOW)	1
1.	25-253-05	HEIGHT ADJUST PLATE	1
2.	25-133-21	BRASS SCREW ASSEMBLY, 1/4-20	2
3.	25-253-03	STOP PLATE HOLDER	1
4.	123-0276	SCREW, 1/4-20 x 1/2 TRUSS HD. SS	2
5.	123-0063	WASHER, PLAIN	6
6.	25-253-11	STOP PLATE POST	2
7.	123-1442	SCREW, 1/4-20 X 1/2 BTN. SOC. CAP SS	2
8.	123-1948	LOCKNUT, 1/4-20, HEX SS 18-8	2
9.	123-1687	ADJUSTING HANDLES, PLASTIC	2
10.	123-1806	SCREW, 1/4-20 x 5/8 FL. SOC. HD. SS 18-8	2
11.	25-253-10	MEDIA GUIDE	1
12.	123-1503	SCREW, 10-24 x 3/8 SOC. HD. BTN. ST. STEEL	3
13.	26-103-09	BALL CUSHION	1
14.	26-103-08	BALL GUIDE	3
15.	123-1601	BALL, 3/4" CHROME STEEL	6

ASSEMBLY VIEW

**GROUP 1.3
CONVEYOR
SUPPORT**



KEY	PART NO.	DESCRIPTION	QTY.
1.	25-140-29	CARRIAGE BOLT	1
2.	25-140-28	CONVEYOR LEG	1
3.	123-1364	CASTER	2
4.	123-0017	SCREW, 10-32 x 1/4 PH TRUSS HD.	8
5.	25-250-25	CONVEYOR SKIRT	1
6.	123-0096	WASHER, PLASTIC, 3/8 x 3/4 x 1/16	1
7.	123-1363	KNOB	1

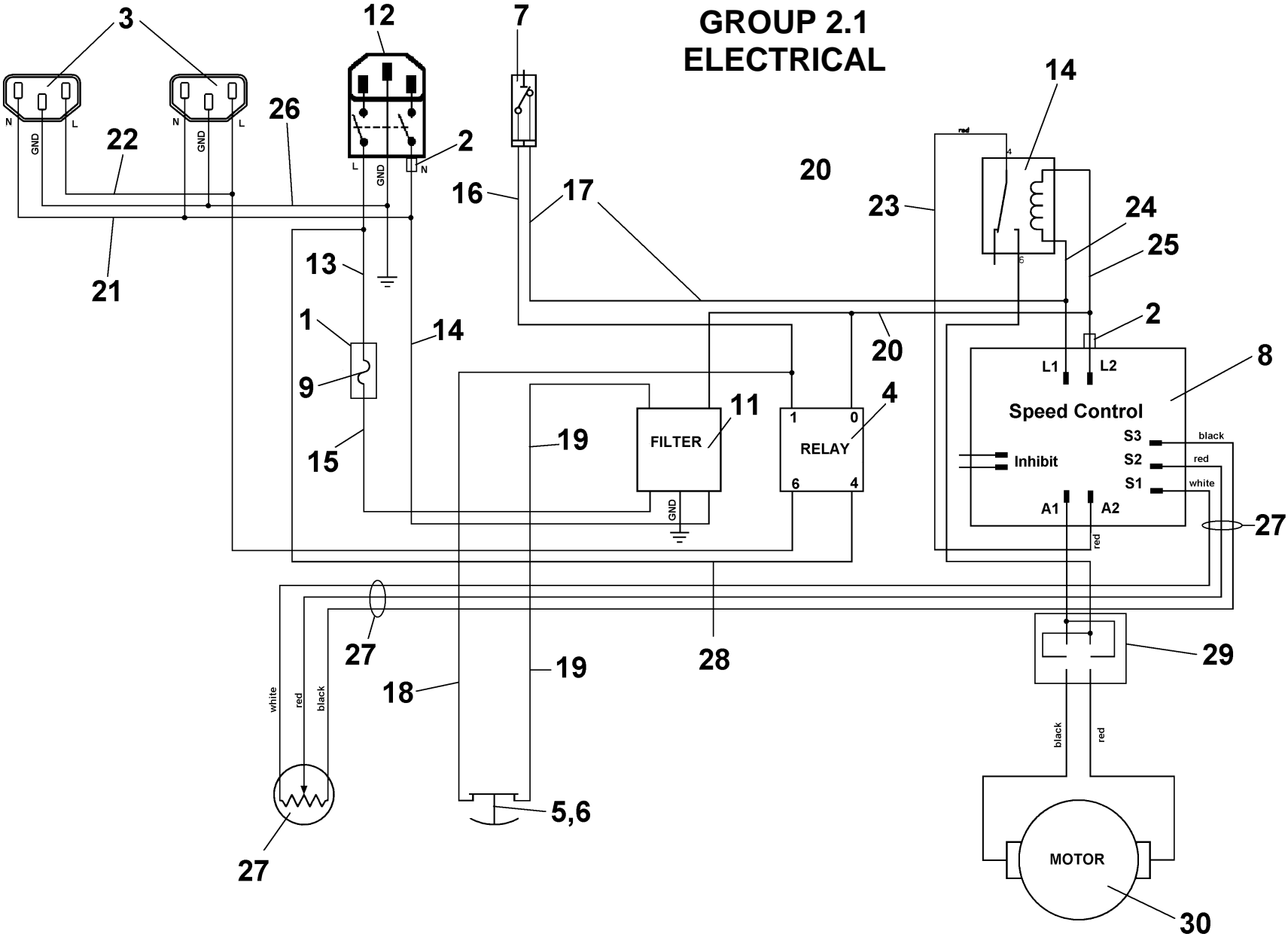


**GROUP 2.0
ELECTRICAL HARDWARE**

GROUP 2.0 ELECTRICAL HARDWARE

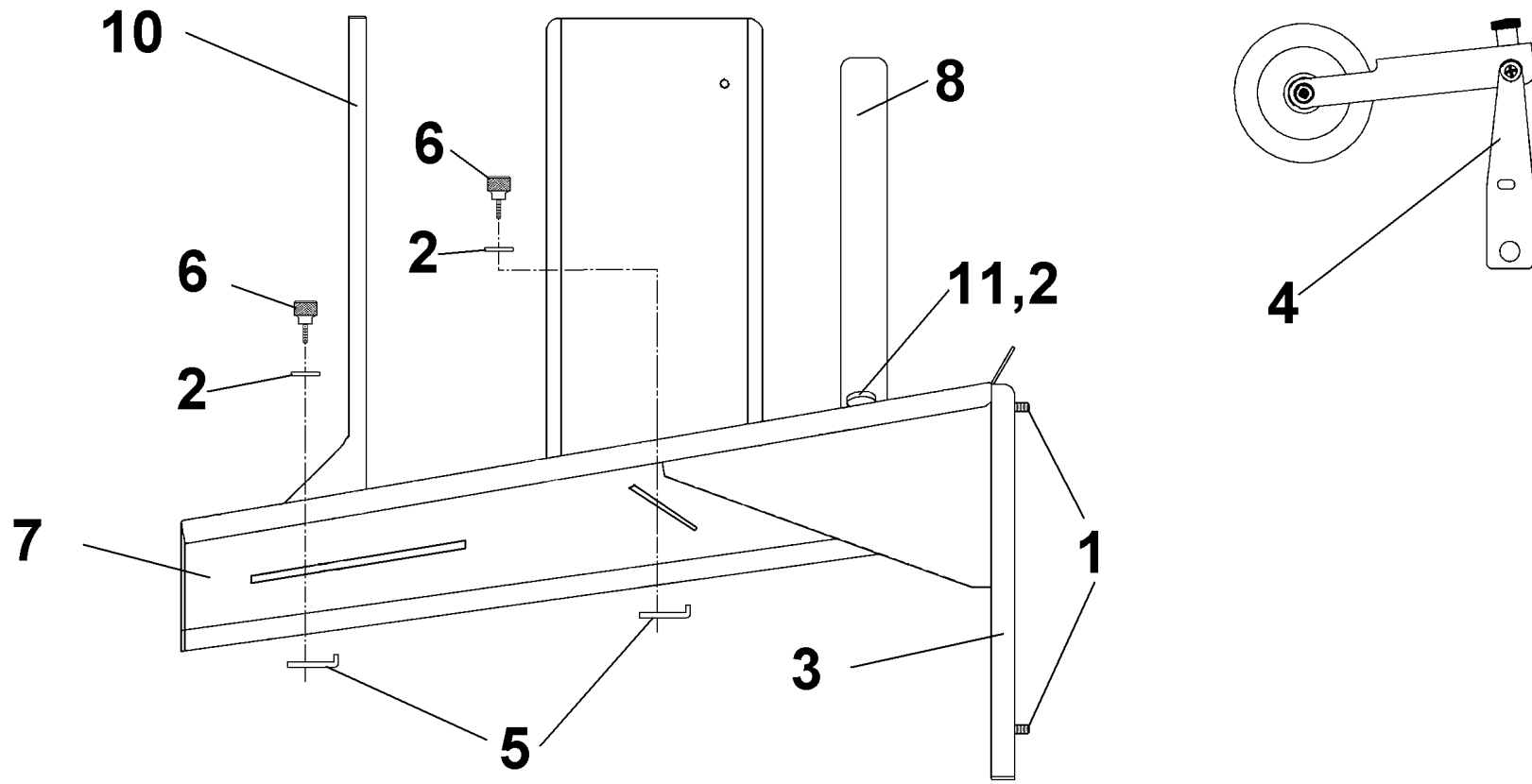
KEY	PART NO.	DESCRIPTION	QTY.
1.	123-0017	SCREW, 10-32 x 12/4 PH TRUSS HD.	1
2.	123-0063	WASHER, PLAIN	4
3.	123-0064	LOCK WASHER, 1/4	4
4.	123-0182	SCREW, 1/4-28 x 3/4 SOC. HD. CAP. SS	4
5.	123-0237	STAR WASHER, #20	1
6.	123-0252	STAR WASHER, #6	3
7.	123-0274	SCREW, 6-32 x 3/8 PH TRUSS HD.	2
8.	123-0298	SET SCREW, 10-24 x 3/16 CUP PT. SOC.	1
9.	123-0461	SET SCREW, 6-32 x 3/16 CUP PT. SOC.	6
10.	123-1135	SCREW, 6-32 x 12/4 PH TRUSS HD. SS	2
11.	123-1359	RELAY, OMRON G7L-1A-TUB-J-CB-AC 100/120	1
12.	123-1405	SPEED CONTROL	1
13.	123-1604	RELAY, KUEP-3A15	1
14.	22-540-09	FILTER ASSEMBLY, CORCOM 2VRI	1
15.	25-250-17	MOTOR BASE	1
16.	25-520-20	SWITCH ASSEMBLY	1
17.	26-102-20	RELAY HOLDER ASSEMBLY	1
18.	32-500-12	MOTOR ASSEMBLY	1
19.	65-303-01	MOTOR PULLEY ASSEMBLY, 14 GROOVES	1
20.	123-1702	BELT, TIMING, 170XL043, 1/5 PITCH	1
21.	123-1366	CONTACT BLOCK, 1NC	1
22.	123-1367	PUSHBUTTON, RED MUSHROOM (EMERGENCY)	1
23.	25-520-17	POTENTIOMETER ASSEMBLY	1
24.	123-0096	WASHER, PLASTIC 3/8 x 3/4 x 1/16	2
25.	123-0085	LOCK WASHER, INTERNAL TOOTH 3/8 SS	1
26.	123-0086	NUT, 3/8-32 x 1/2 x 3/32 HEX SS	1
27.	123-1524	CURVED DISC SPRING	1
28.	123-0523	WASHER, 1/4 x 1/2 x 0.032	1
29.	123-1518	KNOB	1
30.	123-1519	CAP, GRAY WITH WHITE LINE	1

GROUP 2.1 ELECTRICAL



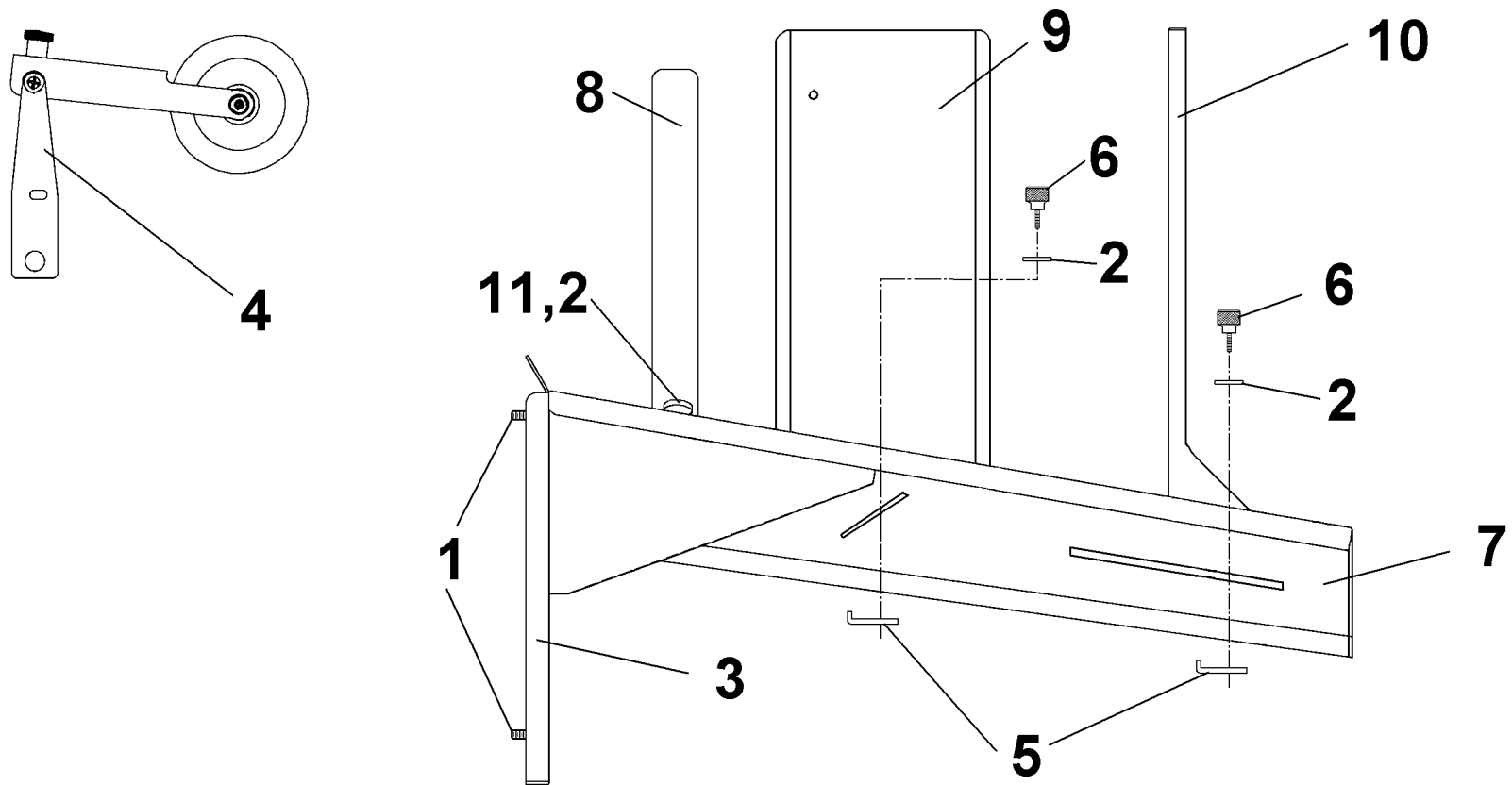
GROUP 2.1 ELECTRICAL

KEY	PART NO.	DESCRIPTION	QTY.
1.	123-0355	FUSE HOLDER	1
2.	123-0606	DOUBLE DISCONNECT	5
3.	123-1108	OUTLET, SCHURTER #6600.4315	2
4.	123-1359	RELAY, OMRON G7L-1A-TUB-J-CB-AC 100/120	1
5.	123-1366	BLOCK, CONTACT 704-9002 SAFETY SWITCH	1
6.	123-1367	PUSHBUTTON, RED MUSHROOM (EMERGENCY)	1
7.	123-1397	CIRCUIT BREAKER, 2A RESETTABLE	1
8.	123-1405	SPEED CONTROL	1
9.	123-1585	FUSE, 2A SLO-BLO	1
10.	123-1604	RELAY, KUER-3A15	1
11.	22-540-09	FILTER ASSEMBLY, CORCOM 2VRI	1
12.	25-520-02	POWER INLET	1
13.	25-520-03	WIRE HARNESS, POWER INLET FUSE	1
14.	25-520-04	WIRE HARNESS, POWER INLET FILTER	1
15.	25-520-05	WIRE HARNESS, FUSE - FILTER	1
16.	25-520-06	WIRE HARNESS, RELAY - CIRCUIT BREAKER	1
17.	25-520-07	WIRE HARNESS, SPEED CONTROL - CIRCUIT BREAKER	1
18.	25-520-08	WIRE HARNESS, RELAY - STOP SWITCH	1
19.	25-520-09	WIRE HARNESS, FILTER - STOP SWITCH	1
20.	25-520-10	WIRE HARNESS, FILTER - SPEED CONTROL - RELAY	1
21.	25-520-11	WIRE HARNESS, DRYER OUTLETS	1
22.	25-520-12	WIRE HARNESS, DRYER OUTLETS	1
23.	25-520-13	WIRE HARNESS, SPEED CONTROL RELAY	1
24.	25-520-14	WIRE HARNESS, SPEED CONTROL RELAY	1
25.	25-520-15	WIRE HARNESS, SPEED CONTROL RELAY	1
26.	25-520-16	WIRE HARNESS, DRYER OUTLETS GROUND	1
27.	25-520-17	POTENTIOMETER, SPEED CONTROL ASSEMBLY	1
28.	25-520-18	WIRE HARNESS, RELAY - POWER INLET	1
29.	25-520-20	REVERSING SWITCH ASSEMBLY	1
30.	32-500-12	MOTOR ASSEMBLY	1



**GROUP 3.0
DT-860R DROP TRAY
R-L (OPTIONAL)**

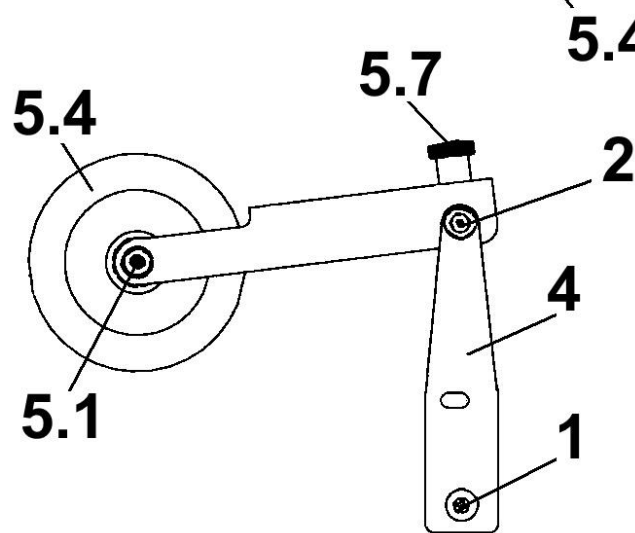
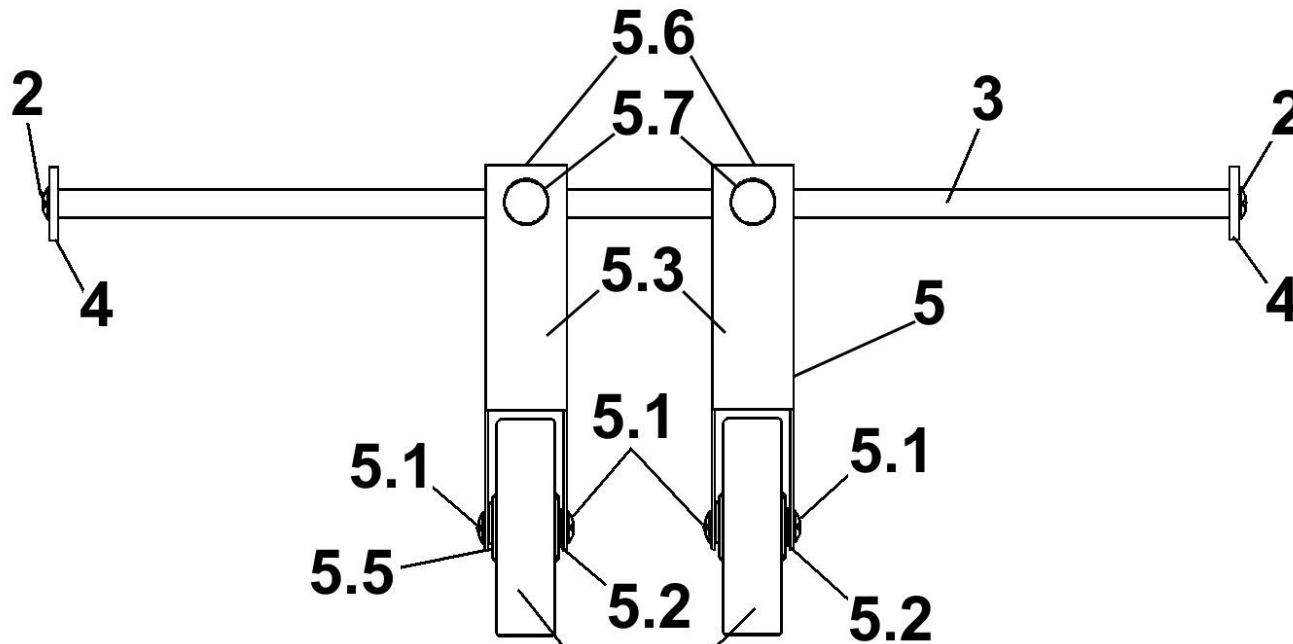
KEY	PART NO.	DESCRIPTION	QTY.
1.	123-0434	SCREW, 10-32 x 5/16 SOC. CAP. SS 18-8	4
2.	123-0068	WASHER, #10 PLAIN SS 18-8	3
3.	25-252-04	DROP TRAY BASE	1
4.	25-254-51	TOP MEDIA GUIDE ASSY. (SEE GROUP 3.2)	1
5.	29-400-16	NUT	2
6.	29-400-28	KNOB ASSEMBLY, 10-32 x 1/2	2
7.	29-400-07	DROP TRAY PLATFORM	1
8.	29-400-17	MEDIA GUIDE	1
9.	29-400-20	SIDE GUIDE ASSEMBLY	1
10.	29-400-22	STOPPER ASSEMBLY	1
11.	94-104-06	METERING BRACKET KNOB	1



KEY	PART NO.	DESCRIPTION	QTY.
1.	123-0434	SCREW, 10-32 x 5/16 SOC. CAP. SS 18-8	4
2.	123-0068	WASHER, #10 PLAIN, SS 18-8	3
3.	25-252-04	DROP TRAY BASE	1
4.	25-254-51	TOP MEDIA GUIDE ASSY. (SEE GROUP 3.2)	1
5.	29-400-16	NUT	2
6.	29-400-28	KNOB ASSEMBLY, 10-32 x 1/2	2
7.	25-252-09	DROP TRAY PLATFORM	1
8.	25-252-17	MEDIA GUIDE	1
9.	25-252-20	SIDE GUIDE ASSEMBLY	1
10.	25-252-22	STOPPER ASSEMBLY	1
11.	94-104-06	KNOB, METERING BRACKET	1

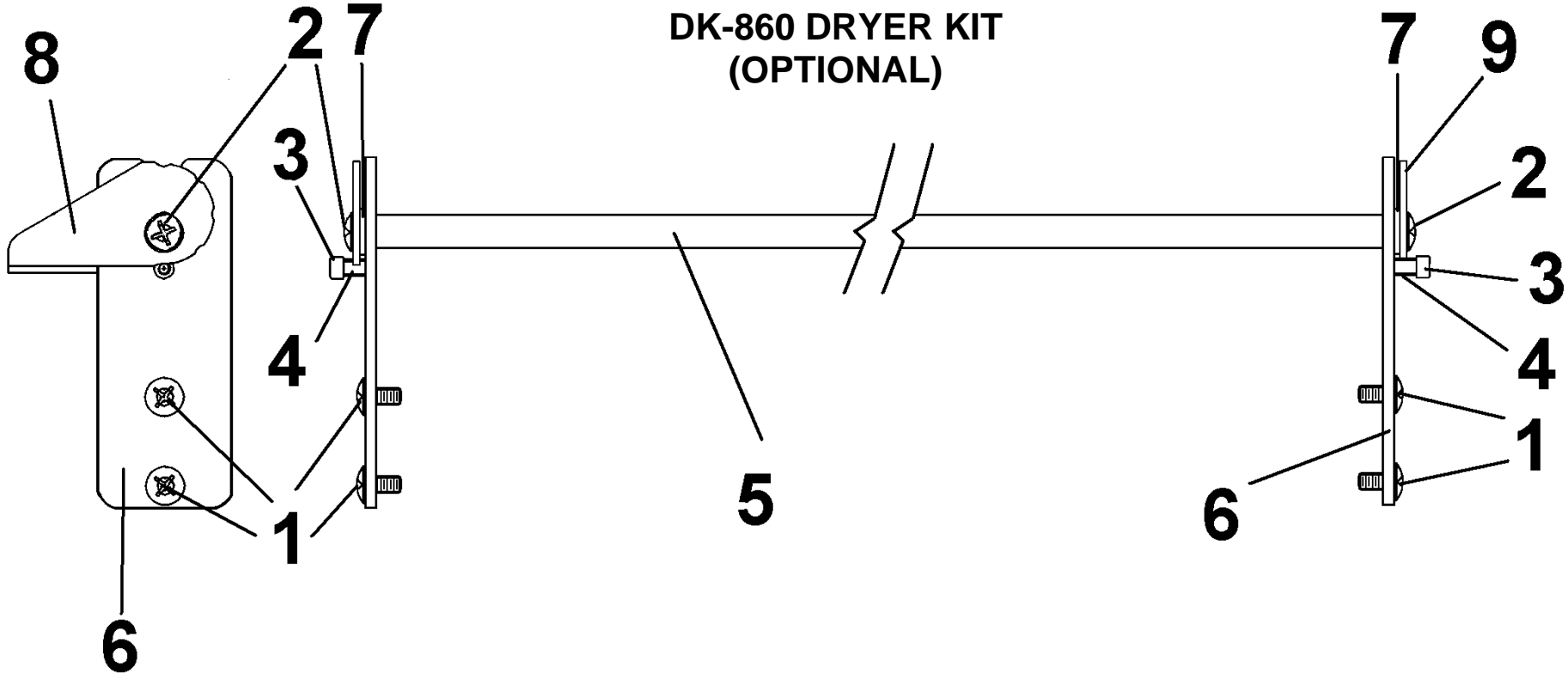
GROUP 3.1
DT-860L DROP TRAY
L-R (OPTIONAL)

GROUP 3.2 GUIDE ROLLERS



KEY	PART NO.	DESCRIPTION	QTY.
1.	123-0017	SCREW, 10-32 x 1/4 PH TRUSS HD.	4
2.	123-1442	SCREW, 1/4-20 x 1/2 BTN. HD. SOC. CAP SS	2
3.	25-140-46	CROSS ROD	1
4.	25-254-44	SKID WHEEL HOLDER	2
5.	26-104-07	WHEEL ARM ASSEMBLY	2
5.1	123-0024	SCREW, 10-32 x 3/8 PH TRUSS HD.	4
5.2	123-0432	C-CLIP	2
5.3	26-104-08	WHEEL ARM	2
5.4	26-104-09	WHEEL ASSEMBLY	2
5.5	26-104-11	SHAFT (NOT SHOWN)	2
5.6	26-104-12	ARM GUIDE (NOT SHOWN)	2
5.7	94-124-28	KNOB ASSEMBLY	2

**GROUP 4.0
DK-860 DRYER KIT
(OPTIONAL)**



KEY	PART NO.	DESCRIPTION	QTY.
1.	123-0017	SCREW, 10-32 x 1/4 PH TRUSS HD.	4
2.	123-0024	SCREW, 10-32 x 3/8 PH TRUSS HD.	2
3.	123-1457	SCREW, 6-32 x 3/8 SOC. HD. SS	2
4.	20-100-37	SPACER	2
5.	25-254-15	ROD	1
6.	25-254-04	DRYER BRACKET	2
7.	32-110-48	SPACER	2
8.	57-603-12	HEIGHT ADJUSTMENT ARM	1
9.	57-603-13	HEIGHT ADJUSTMENT WHEEL	1

INDEX

PART NO.	GROUP	KEY
123-0017	1.0	2
123-0017	1.1	6
123-0017	1.3	4
123-0017	2.0	1
123-0017	3.2	1
123-0017	4.0	1
123-0024	3.2	5.1
123-0024	4.0	2
123-0054	1.1	9
123-0063	1.2	5
123-0063	2.0	2
123-0064	2.0	3
123-0068	3.0	2
123-0068	3.1	2
123-0085	2.0	25
123-0086	2.0	26
123-0096	1.3	6
123-0096	2.0	24
123-0182	2.0	4
123-0237	2.0	5
123-0252	2.0	6
123-0274	2.0	7
123-0276	1.2	4
123-0298	1.1	3
123-0298	2.0	8
123-0355	2.1	1
123-0400	1.1	8
123-0432	3.2	5.2
123-0434	3.0	1
123-0434	3.1	1
123-0461	2.0	9
123-0523	2.0	28
123-0567	1.1	12
123-0606	2.1	2
123-1108	2.1	3
123-1135	2.0	10
123-1359	2.0	11
123-1359	2.1	4
123-1363	1.3	7
123-1364	1.3	3
123-1366	2.0	21
123-1366	2.1	5
123-1367	2.0	22
123-1367	2.1	6
123-1397	2.1	7
123-1405	2.0	12
123-1405	2.1	8
123-1442	1.0	5
123-1442	1.2	7
123-1442	3.2	2
123-1457	4.0	3
123-1503	1.2	12

PART NO.	GROUP	KEY
123-1518	2.0	29
123-1519	2.0	30
123-1524	2.0	27
123-1585	2.1	9
123-1601	1.2	15
123-1604	2.0	13
123-1604	2.1	10
123-1687	1.2	9
123-1702	1.1	2
123-1702	2.0	20
123-1806	1.2	10
123-1948	1.2	8
123-2031	1.1	11
20-100-37	4.0	4
22-540-09	2.0	14
22-540-09	2.1	11
25-133-21	1.2	2
25-140-28	1.3	2
25-140-29	1.3	1
25-140-46	3.2	3
25-250-04	1.0	3
25-250-12	1.0	7
25-250-15	1.0	6
25-250-17	2.0	15
25-250-24	1.0	4
25-250-25	1.3	5
25-250-27	1.1	5
25-250-28	1.1	13
25-250-29	1.1	14
25-250-39	1.0	1
25-250-40	1.0	8
25-250-40	1.1	7
25-251-03	1.1	1
25-251-05	1.1	10
25-252-04	3.0	3
25-252-04	3.1	3
25-252-09	3.1	7
25-252-17	3.1	8
25-252-20	3.1	9
25-252-22	3.1	10
25-253-01	1.2	--
25-253-03	1.2	3
25-253-05	1.2	1
25-253-10	1.2	11
25-253-11	1.2	6
25-254-04	4.0	6
25-254-15	4.0	5
25-254-44	3.2	4
25-254-51	3.0	4
25-254-51	3.1	4
25-520-02	2.1	12
25-520-03	2.1	13

PART NO.	GROUP	KEY
25-520-04	2.1	14
25-520-05	2.1	15
25-520-06	2.1	16
25-520-07	2.1	17
25-520-08	2.1	18
25-520-09	2.1	19
25-520-10	2.1	20
25-520-11	2.1	21
25-520-12	2.1	22
25-520-13	2.1	23
25-520-14	2.1	24
25-520-15	2.1	25
25-520-16	2.1	26
25-520-17	2.0	23
25-520-17	2.1	27
25-520-18	2.1	28
25-520-20	2.0	16
25-520-20	2.1	29
26-102-20	2.0	17
26-103-08	1.2	14
26-103-09	1.2	13
26-104-07	3.2	5
26-104-08	3.2	5.3
26-104-09	3.2	5.4
26-104-11	3.2	5.5
26-104-12	3.2	5.6
29-400-07	3.0	7
29-400-16	3.0	5
29-400-16	3.1	5
29-400-17	3.0	8
29-400-20	3.0	9
29-400-22	3.0	10
29-400-28	3.0	6
29-400-28	3.1	6
32-110-48	4.0	7
32-500-12	1.1	15
32-500-12	2.0	18
32-500-12	2.1	30
57-603-12	4.0	8
57-603-13	4.0	9
65-303-01	1.1	4
65-303-01	2.0	19
94-104-06	3.0	11
94-104-06	3.1	11
94-124-28	3.2	5.7

