



# **ASTRO**

## **CDE-860**

### **CONVEYOR/STACKER**



## **OPERATOR MANUAL**

# SAFETY PRECAUTIONS

THIS EQUIPMENT PRESENTS NO PROBLEM WHEN USED PROPERLY. OBSERVE SAFETY RULES WHEN OPERATING THE CD-860 CONVEYOR.

BEFORE USING CONVEYOR, READ THIS MANUAL CAREFULLY AND FOLLOW RECOMMENDED PROCEDURES, SAFETY WARNINGS, AND INSTRUCTIONS:

- ✓ Keep hands, hair, and clothing clear of rollers and other moving parts.
- ✓ Avoid touching moving parts or materials while the machine is in use. Before clearing a jam, be sure machine mechanisms come to a stop.
- ✓ Always turn off the machine before making adjustments, cleaning the machine, or performing any maintenance covered in this manual.
- ✓ Use the power cord supplied with the machine and plug it into a properly grounded, easily accessible wall outlet located near the machine. Failure to properly ground the machine can result in severe personal injury and/or fire.
- ✓ Power cord and wall plug are the primary means of disconnecting the machine from the power supply.
- ✓ **DO NOT** use an adapter plug on the line cord or wall outlet.
- ✓ **DO NOT** remove the ground pin from the line cord.
- ✓ **DO NOT** route the power cord over sharp edges or trap it between furniture.
- ✓ Avoid using wall outlets controlled by wall switches, or shared with other equipment.
- ✓ Make sure there is no strain on the power cord caused by jamming between equipment, walls or furniture.
- ✓ **DO NOT** remove covers. Covers enclose hazardous parts that should be accessed by a qualified service representative. Report any cover damage to your service representative.
- ✓ This machine requires periodic maintenance. Contact your authorized service representative for required service schedules.
- ✓ To prevent overheating, do not cover the vent openings.
- ✓ Use this equipment only for its intended purpose.

In addition, follow any specific occupational safety and health standards for your workplace or area.

This manual is intended solely for the use and information of Astro Machine Corp. its designated agents, customers, and their employees. The information in this guide was obtained from several different sources that are deemed reliable by all industry standards. To the best of our knowledge, that information is accurate in all respects. However, neither Astro Machine Corp. nor any of its agents or employees shall be responsible for any inaccuracies contained herein.

All rights reserved. No part of this book may be reproduced or transmitted in any form or by any means, electronic or mechanical, including photocopying, recording, or any information storage and retrieval system, without permission in writing from the publisher.

# Table of Contents

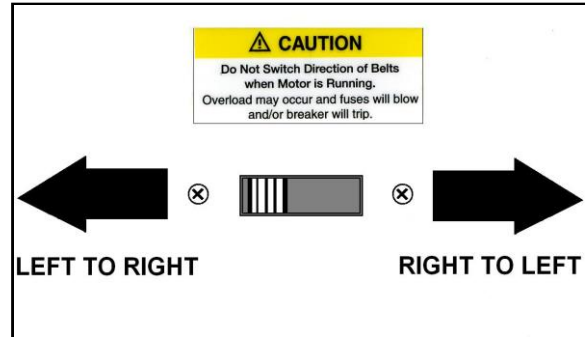
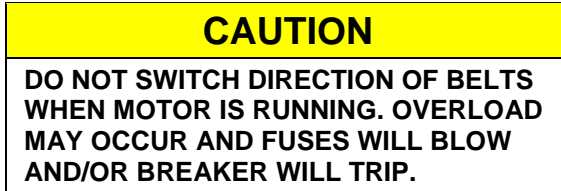
<b>Assembly and Operation Instructions</b>	<b>1</b>
Setting up Conveyor	1
Installing Conveyor	2
<b>Operating Conveyor</b>	<b>3</b>
<b>Troubleshooting</b>	<b>4</b>
<b>Index</b>	<b>1</b>

# Assembly and Operation Instructions

This Conveyor can be used for **Right Angle** or **Straight Through** operation. In addition, it can be run in the **Left-to-Right** or **Right-to-Left** operating mode.

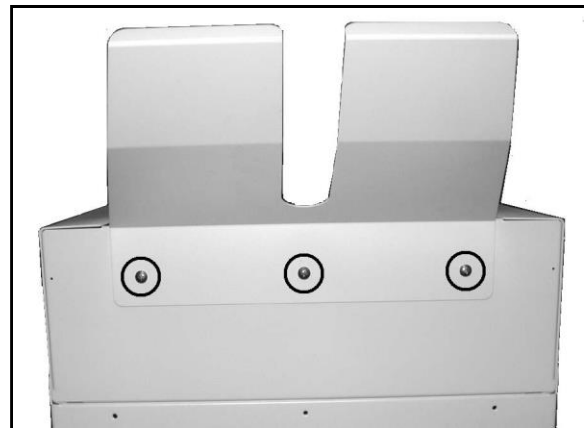
## Setting up Conveyor

1. Determine if Conveyor is to be used in the **Left-to-Right** or **Right-to-Left** mode. A switch is mounted on the Motor Mounting Plate (*under and near the front left-hand side of the Conveyor*).



2. Mount Stacking Tray to the appropriate end of the Conveyor using the three screws supplied.

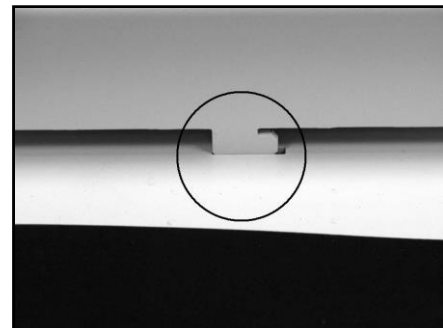
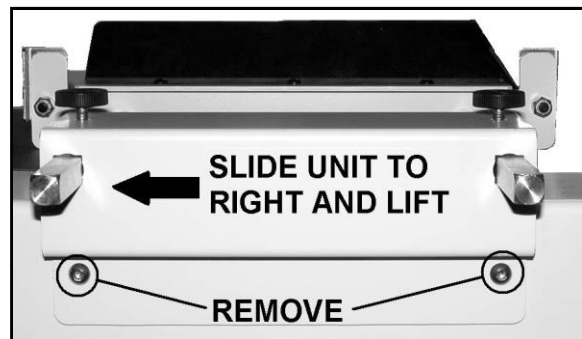
**NOTE: STACKING TRAY CAN BE MOUNTED TO EITHER END OF CONVEYOR, DETERMINED BY DIRECTION BELTS TRAVEL.**



3. If Conveyor is used in **Straight-Through** mode, remove Right Angle Guide.

**To move Right Angle Guide to the opposite end of the Conveyor:**

- a) Remove Right Angle Guide by first removing the two screws that attach Mounting Bracket to Conveyor.
- b) Slide Guide Assembly to the right and lift it from the Conveyor.



## ***Installing Conveyor***

1. Roll Conveyor up to machine it is to be used with.
2. Adjust height of Conveyor to match output end of machine by loosening (*counterclockwise*) the two large knobs (*one on each end*), raising Conveyor to proper height and tightening (*clockwise*) the two knobs, one at a time.

### **WARNING!**

**CONVEYOR IS VERY HEAVY.**

**IT IS RECOMMENDED THAT TWO PEOPLE WORK TOGETHER TO RAISE CONVEYOR TO THE PROPER OPERATING HEIGHT. A BLOCK OF WOOD UNDER CENTER OF LEG WILL HELP PREVENT INJURY DURING SET-UP.**



# Operating Conveyor

1. Plug Conveyor into a properly grounded wall outlet using the power cord supplied. Turn Main Power Switch ON (*located above the power receptacle*).

**CAUTION**

**CONVEYOR IS DESIGNED TO BE PLUGGED INTO A GROUNDED OUTLET. FOR YOUR SAFETY, DO NOT REMOVE GROUND PIN FROM THE LINE CORD.**

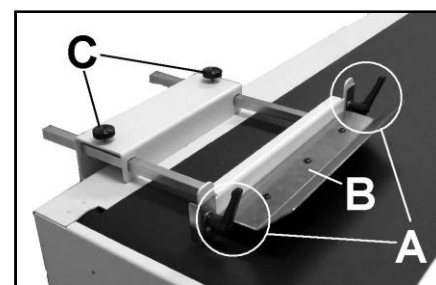


2. Adjust Speed Control Knob on front of Conveyor to obtain proper speed. If Conveyor does not start, check to see that Emergency Stop Switch has been released.

**NOTE: EMERGENCY STOP SWITCH IS ACTIVATED BY PUSHING IN ON IT. RELEASE SWITCH BY TURNING IT CLOCKWISE IN DIRECTION OF ARROWS.**

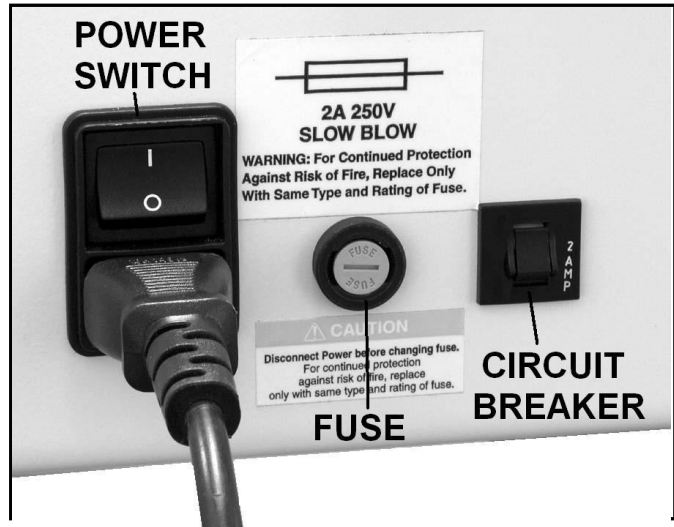


3. If using Conveyor in **Right Angle mode** (*Conveyor is perpendicular to the machine feeding it*), **adjust Right Angle Guide as follows:**
  1. With Conveyor Belt stopped, loosen the two Ball Rack Locking Levers [A]. Raise Ball Rack [B]. Place a piece of media under Ball Rack, then lower and lock Levers.
  2. Loosen locking screws [C] and move Ball Rack Assembly in or out to center media on Belt.
4. **Check operation:**  
Feed stock through machine and onto Conveyor.



# Troubleshooting

If Conveyor fails to run, check for jammed media between the Belt and Roller.  
Also, check Fuse and Motor Circuit Breaker and replace or reset if necessary. Fuse Holders and Circuit Breaker are located on the rear of the Conveyor, next to the power inlet.



## WARNING!

**DISCONNECT POWER CORD WHEN CHECKING OR REPLACING FUSE!  
ALWAYS REPLACE FUSE WITH SAME TYPE. FAILURE TO DO SO MAY  
DAMAGE ELECTRONIC CIRCUIT BOARD.**

# Index

<b>A</b>	
Assembly .....	1
<b>C</b>	
Circuit Breaker, Motor .....	4
<b>E</b>	
Emergency Stop Switch.....	3
<b>F</b>	
Fuse .....	4
<b>I</b>	
Install .....	2
<b>J</b>	
Jams, Media.....	4
<b>L</b>	
Left to Right Mode .....	1
<b>M</b>	
Main Power Switch .....	3
<b>O</b>	
Operation .....	1, 3
<b>R</b>	
Right Angle Mode .....	3
Right to Left Mode .....	1
<b>S</b>	
Set-Up.....	1
Speed Control .....	3
Stacking Tray.....	1
Straight Through Mode .....	1
<b>T</b>	
Troubleshooting.....	4





