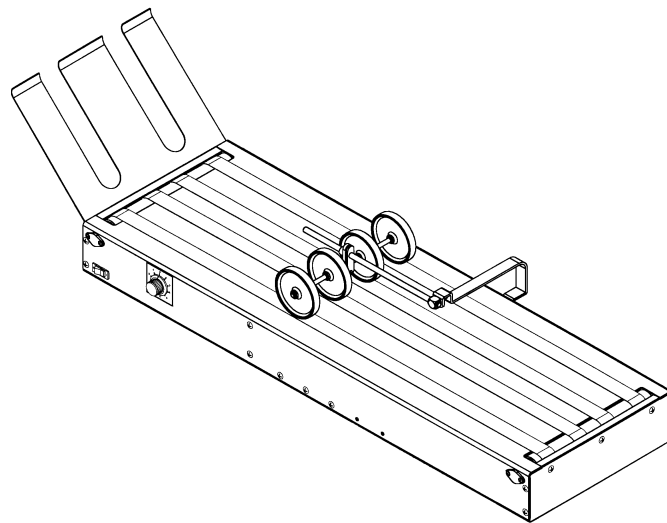




ASTRO

**CD-400HS, CD-400HSA,
CD-400HSE and CD-400HSAE
Conveyor Delivery**



USER'S GUIDE / PARTS CATALOG

INTRODUCTION

The Astro CD-400HS and CD-400HSE (*European version*) are high-speed conveyor delivery units that transport and stack media from the output device. As the first piece of stock exits the duplicator the motor driven conveyor tapes under the stacker wheels move it. The next piece of stock exits the duplicator and overlaps the preceding one. After clearing the stacker wheels the stock can be unloaded by hand without the need to stop the output device.

The Astro CD-400HSA and CD-400HSAE (*European version*) conveyors add the feature of a photosensor that turns the conveyor on only when media is present. With that exception all CD-400 models share the same parts.

SPECIFICATIONS*

Power Requirements	115 VAC, 60 Hz, 0.5 AMP
Optional Availability	220 VAC, 50 Hz, 0.3 AMP
Fuse:	1 AMP
Speed Of Tapes:	0-240 ft/min. (<i>variable</i>)
Dimensions:	Width: 12 in. Length: 40 in. Height: 22-32 in. (<i>with optional C-512 Stand</i>) Weight: 35 pounds

* MANUFACTURER RESERVES THE RIGHT TO CHANGE SPECIFICATIONS WITHOUT WRITTEN NOTICE.

SAFETY PRECAUTIONS

THIS EQUIPMENT PRESENTS NO PROBLEM WHEN USED PROPERLY. HOWEVER, CERTAIN SAFETY MEASURES SHOULD BE OBSERVED WHEN OPERATING THE CONVEYOR:

READ THIS MANUAL CAREFULLY AND FOLLOW RECOMMENDED PROCEDURES.

- KEEP HANDS, HAIR, AND CLOTHING CLEAR OF ROLLERS, TAPES, AND OTHER MOVING PARTS.
- ALWAYS TURN OFF MACHINE BEFORE MAKING ADJUSTMENTS OR CLEANING.
- DISCONNECT POWER CORD WHEN MAKING ANY MACHINE ADJUSTMENTS OR PERFORMING ANY MAINTENANCE NOT COVERED IN THIS MANUAL.

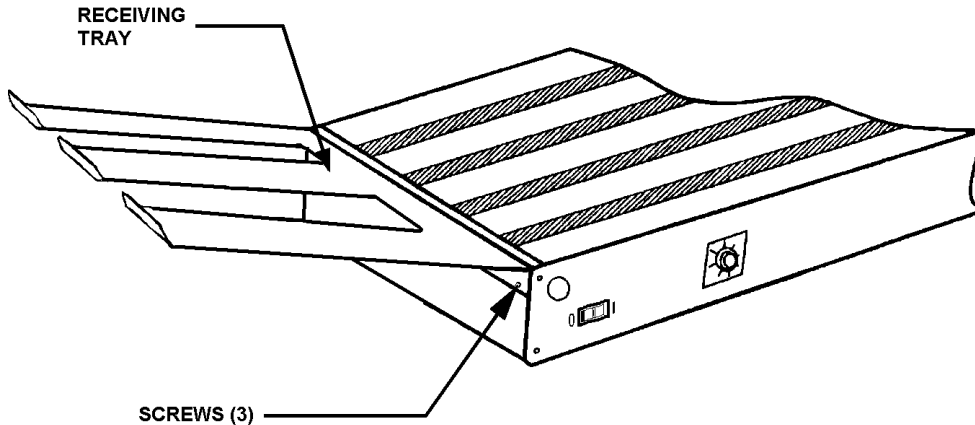
CAUTION

**THIS EQUIPMENT MUST BE CONNECTED TO A PROPERLY GROUNDED OUTLET!
FAILURE TO DO SO CREATES A POTENTIAL DANGER OF ELECTRICAL SHOCK!**

ASSEMBLING THE CONVEYOR

Assembly time is approximately 10 minutes. No special tools are required.

1. Unpack all packaging and remove the parts supplied.
2. Place the Conveyor on the table or other suitable surface.
3. Attach the Receiving Tray to the Conveyor with (*three*) 10-32 screws provided.

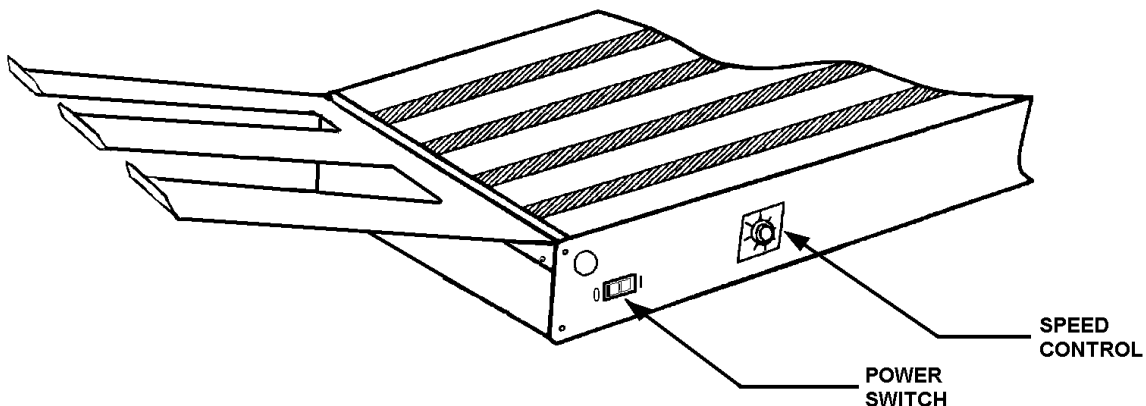


4. Install the Stacker Wheel Assembly using one of the three sets of holes drilled along the length of the Conveyor.

OPERATING THE CONVEYOR

1. Position the Conveyor so that the receiving end is adjacent to the delivery roller of the output device.
2. The stacker wheels should be positioned so that as the stock exits the output device, the lead edge of the stock should just touch the Stacking Wheels as it clears the output device. The stock will then start to overlap the previous piece as it is transported down the Conveyor. The speed of the Conveyor determines the amount of the overlap.

If necessary, reposition the Stacker Wheels. The clamp serves as a fine-position adjustment. Squeezing the lever releases the clamp so that the Wheel Assembly can be repositioned a few inches forward or backward. The Wheel Assembly can be reversed so that the wheels ride “upstream” or “downstream”.



3. Turn on the Conveyor and the output device.
4. Feed stock through the output device and observe the way it is received by the Conveyor.
5. Make necessary readjustments.

NOTE: If necessary, the whole Stacker Wheel Assembly can be moved into another set of holes on the Conveyor.

If the Conveyor should fail to function, check for jammed paper between the tapes and roller. Also check the fuse and replace it if necessary. The fuse holder is located on the underside of the Conveyor in the Speed Control Box.

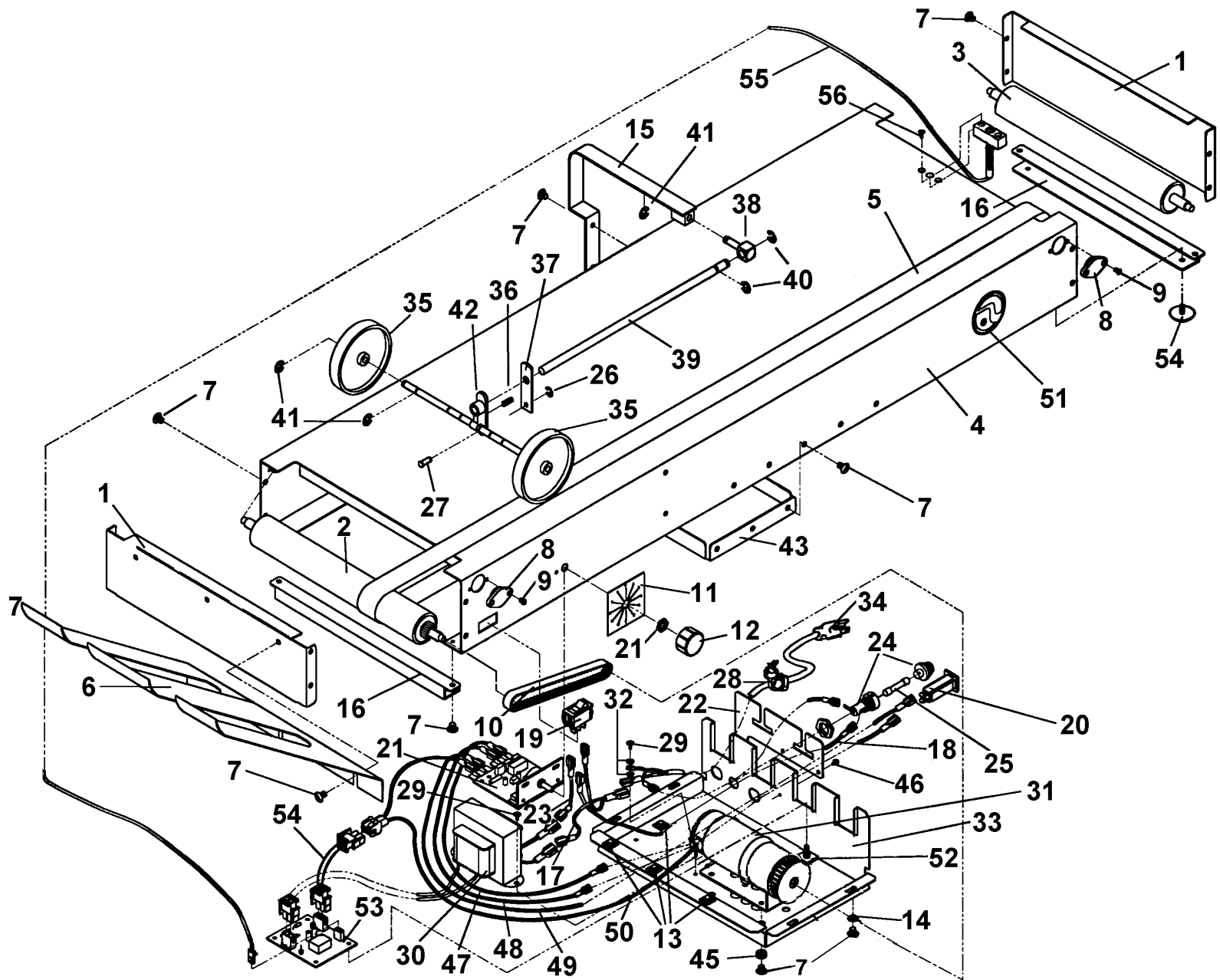
WARNING!

DISCONNECT THE POWER CORD WHEN CHECKING OR REPLACING FUSE!

CAUTION

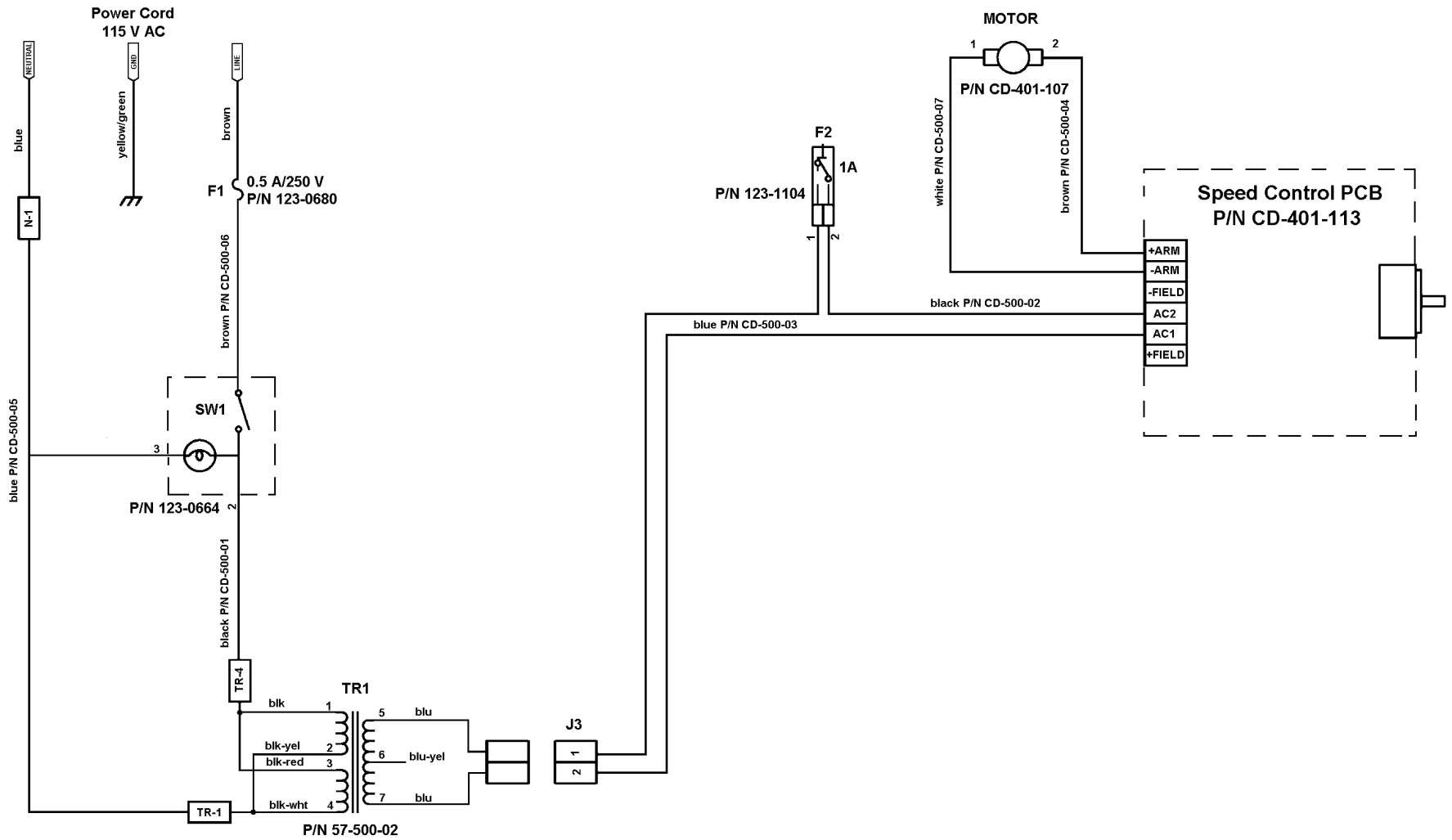
ALWAYS REPLACE THE FUSE WITH THE SAME TYPE. FAILURE TO DO SO MAY DAMAGE THE ELECTRONIC CIRCUIT BOARD, THUS VOIDING WARRANTY.

SHOULD A PROBLEM OCCUR WHICH CANNOT BE CORRECTED IMMEDIATELY, CALL YOUR SERVICE REPRESENTATIVE.

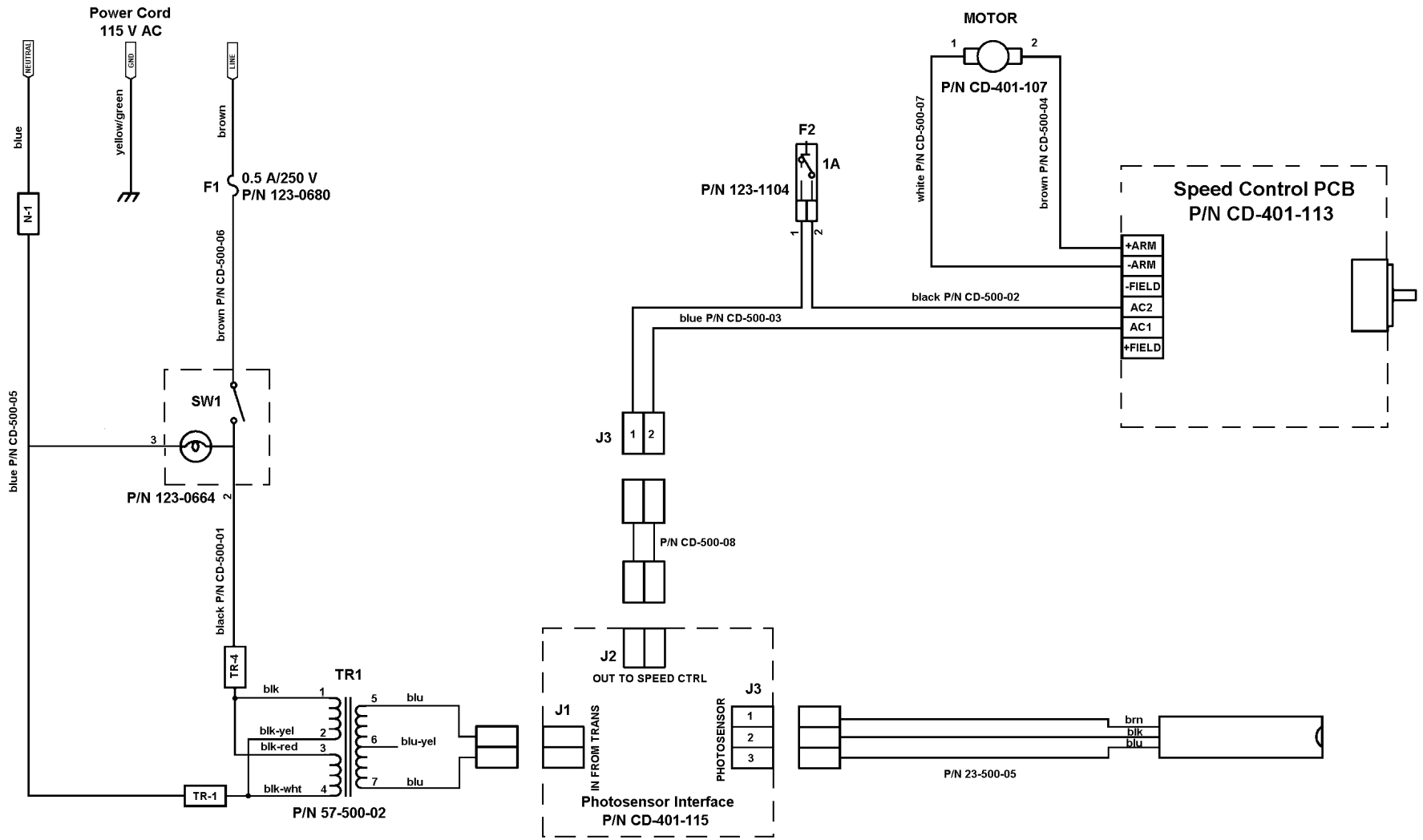


KEY	PART NO.	DESCRIPTION
1.	CD-400-06A	BODY CLOSURE
2.	50-500-40	DRIVE ROLLER ASSEMBLY
3.	50-500-41	IDLER ROLLER
4.	CD-400-03A	CONVEYOR BODY CD-400HS)
4.	CD-402-03A	CONVEYOR BODY (CD-400HSA/HSE)
5.	123-0309	CONVEYOR TAPE
6.	CD-300-17A	RECEIVING TRAY
7.	123-0017	SCREW, 10-32 x 14"
8.	90-103-52	BEARING HOUSING ASSEMBLY
9.	123-0275	SCREW, 6-32 x 1/4"
10.	123-0139	TIMING BELT, 100XLO32
11.	90-105-11	DECAL, SENSOR SWITCH INDICATOR
12.	123-1101	KNOB
13.	123-0945	CABLE TIE MOUNT
14.	123-0237	STAR WASHER, #10
15.	CD-300-14	BAIL
16.	CD-401-30	CONVEYOR SUPPORT
17.	CD-500-05	WIRE HARNESS, SWITCH-TRANSFORMER
18.	CD-500-06	WIRE HARNESS, SWITCH-FUSE
19.	123-0664	POWER SWITCH
20.	123-1104	CIRCUIT BREAKER
21.	CD-401-113	SPEED CONTROL ASSEMBLY
22.	CD-401-25	COVER
23.	CD-500-01	WIRE HARNESS, SWITCH-TRANSFORMER
24.	123-0089	FUSE HOLDER
25.	123-0680	FUSE, 0.5A/250V (115V, 60Hz)
25.	123-1179	FUSE, 0.3A/250V (220V, 50Hz)
26.	123-0080	C-CLIP, 3/16"
27.	71-121-03	PIN
28.	123-0301	STRAIN RELIEF

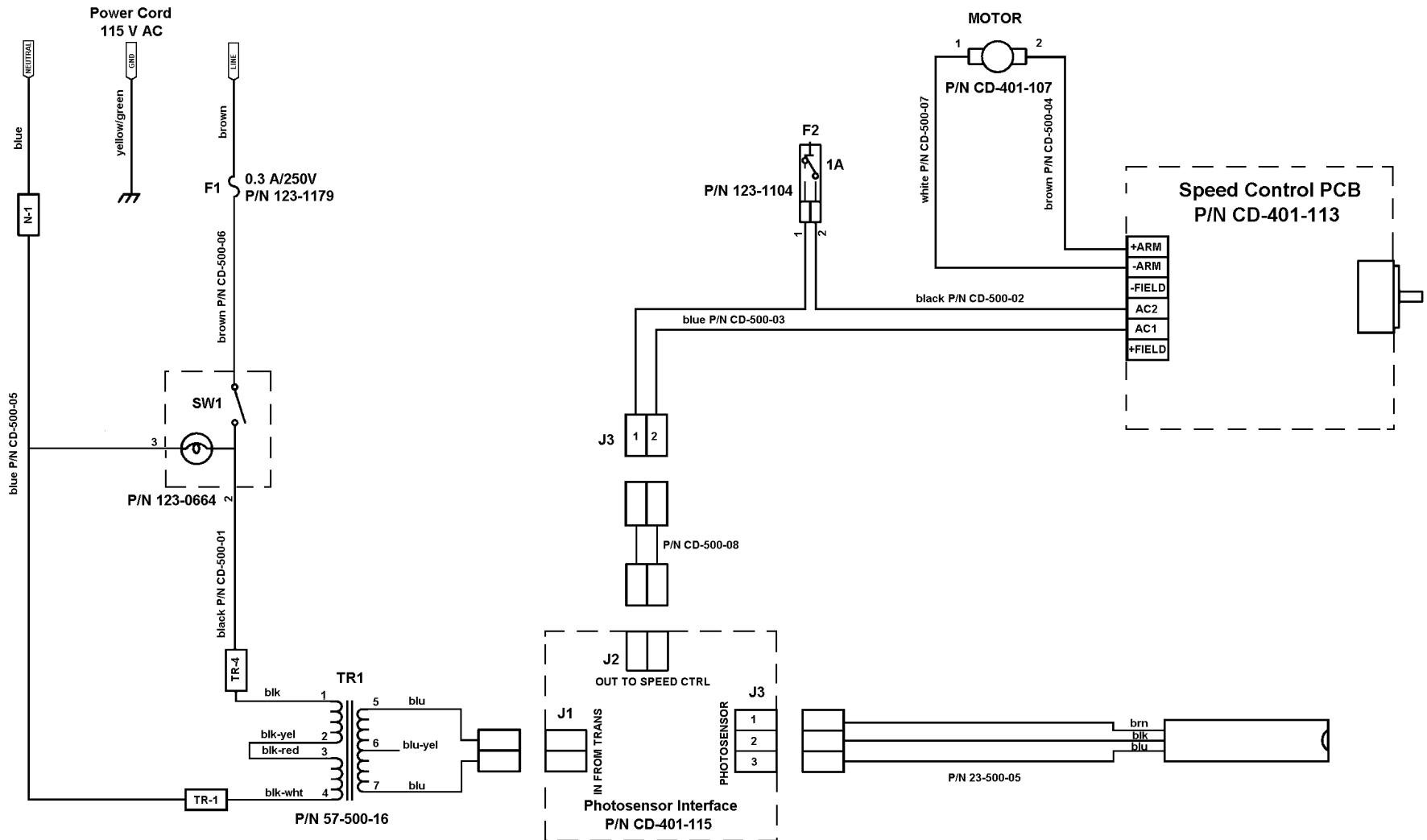
KEY	PART NO.	DESCRIPTION
29	123-0125	SCREW, 8-32 x 3/16
30	57-500-02	TRANSFORMER (115V, 60Hz)
30	57-500-16	TRANSFORMER (220V, 50Hz)
31	CD-401-107	MOTOR ASSEMBLY
32	123-0252	STAR WASHER, #6
33	CD-401-105	ELECTRIC CABINET
34	CD-300-25	POWER CORD (115V US DOMESTIC)
34	CD-301-25	POWER CORD (220V EUROPE)
35	CD-300-21	STACKER WHEEL
36	71-120-09	SPRING
37	CD-300-59	CLAMP PLATE
38	CD-300-13	PIVOT, STACKER WHEEL ROD
39	CD-300-11	ROD, STACKER WHEEL
40	123-0432	C-CLIP, 5/16"
41	123-0081	C-CLIP, 1/4"
42	50-500-56	STACKER WHEEL PIVOT ASSEMBLY
43	CD-400-09	CENTER SUPPORT
44	123-0620	RUBBER FOOT (<i>Table-top model only</i>)
45	123-0916	GROMMET 3/16" x 7/16"
46	123-0461	SCREW, 6-32 x 3/16
47	CD-500-04	WIRE HARNESS, SPEED CONTROL-MOTOR
48	CD-500-07	WIRE HARNESS, SPEED CONTROL-MOTOR
49	CD-500-02	WIRE HARNESS, SPEED CONTROL-FUSE
50	CD-500-03	WIRE HARNESS, FUSE-SPEED CONTROL
51	123-0752	DECAL, 2" ROUND ASTRO LOGO
52	123-1286	MOUNT SPACER
53	CD-401-115	PHOTO SENSOR INTERFACE BOARD
54	CD-500-08	WIRE HARNESS, FUSE-SPEED CONTROL BD
55	CD-301-50A	PHOTO SENSOR ASSEMBLY
56	123-0683	SCREW, 6-32 x 5/16 PH UNDERCUT SS



Wiring Diagram CD-400HS



Wiring Diagram CD-400HSA



Wiring Diagram CD-400HSAE (European Version)



Copyright © 2014 Astro Machine Corporation
Elk Grove Village, Illinois 60007
09/04/2014

P/N: 400-CD400 Rev. B