



ASTRO



RTS
HIGH CAPACITY
RECEIVING TRAY/STACKER
PARTS GUIDE

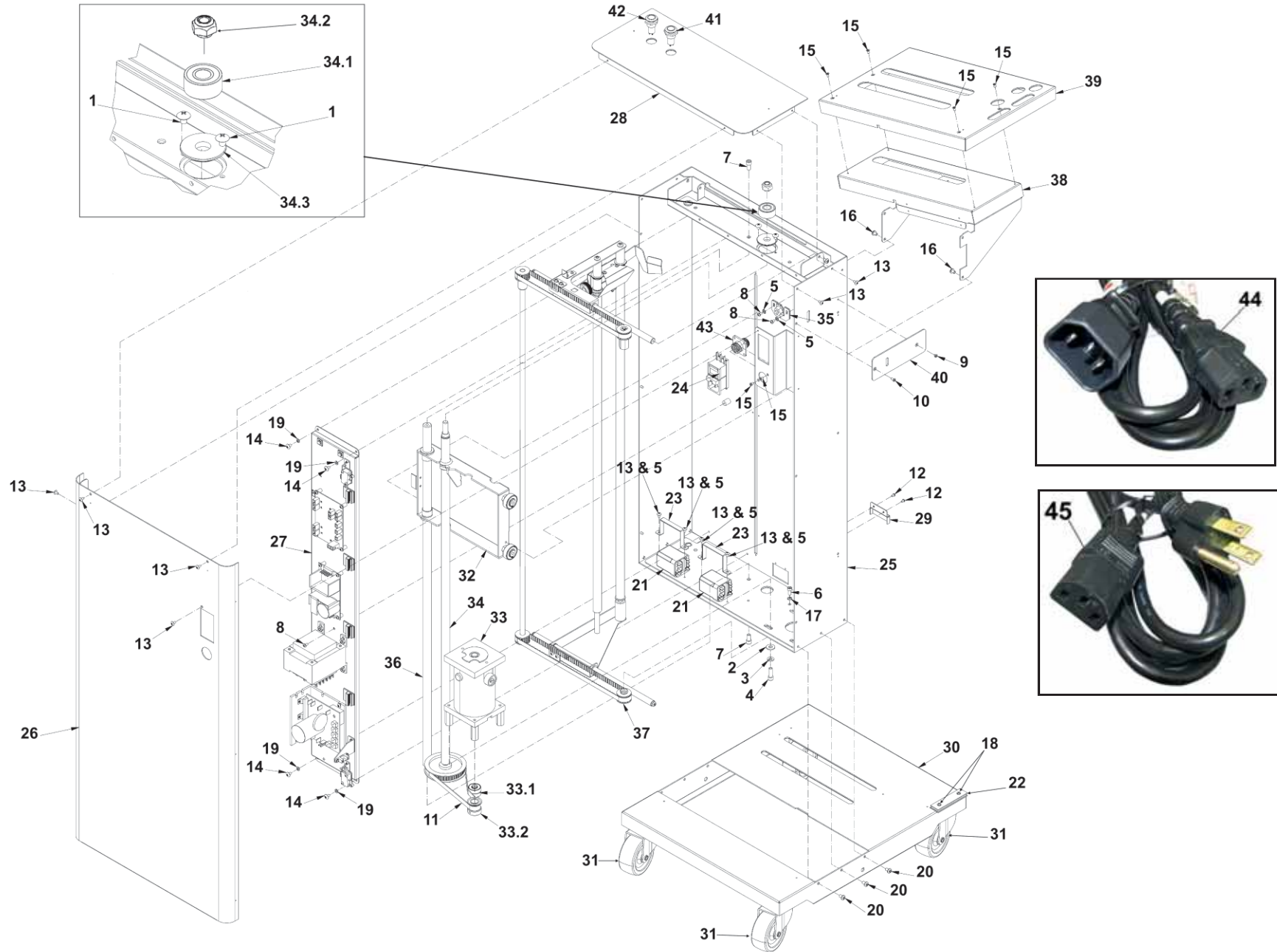
This manual is intended solely for the use and information of Astro Machine Corp., its designated agents, customers, and their employees. The information in this guide was obtained from several different sources that are deemed reliable by all industry standards. To the best of our knowledge, that information is accurate in all respects. However, neither Astro Machine Corp. nor any of its agents or employees shall be responsible for any inaccuracies contained herein.

All rights reserved. No part of this book may be reproduced or transmitted in any form or by any means, electronic or mechanical, including photocopying, recording, or any information storage and retrieval system, without permission in writing from the publisher

Table of Contents

GROUP 1 – MECHANICAL ASSEMBLY	2
GROUP 2 – MEDIA TABLE LIFT ASSEMBLY	4
GROUP 2.1 – THREADED ROD ASSEMBLY	6
GROUP 3 – REAR MEDIA GUIDE ASSEMBLY	7
GROUP 3.1 – REAR MEDIA GUIDE BRACKET ASSEMBLY	8
GROUP 4 – ELECTRICAL POST ASSEMBLY	9
GROUP 5 – STACKER ELECTRICAL – 115V	10
GROUP 5A – STACKER ELECTRICAL – 220V	12
NORMAL WEAR & RECOMMENDED SPARE PARTS	14
INDEX	15

GROUP 1 MECHANICAL ASSEMBLY

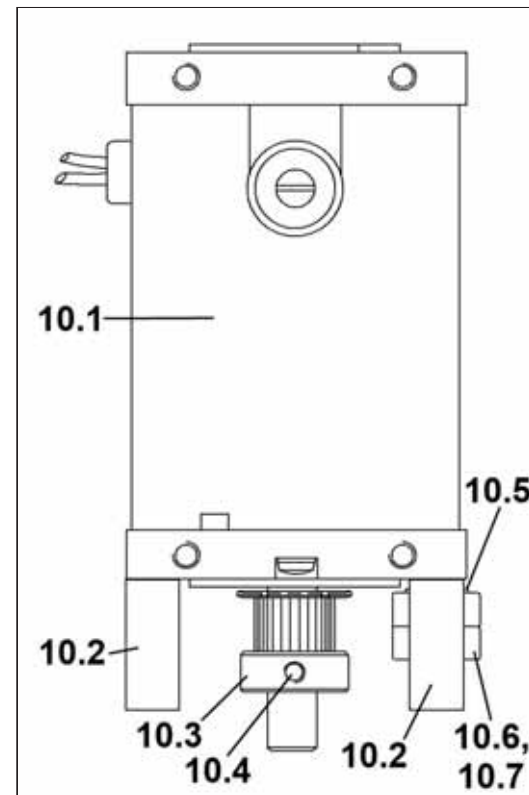
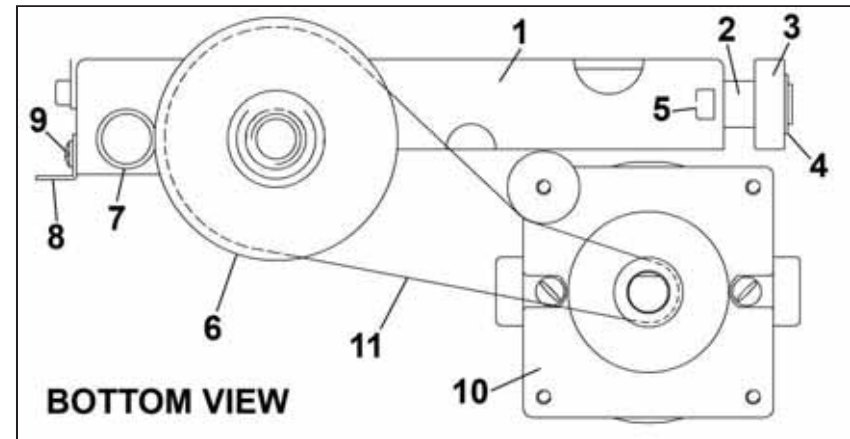
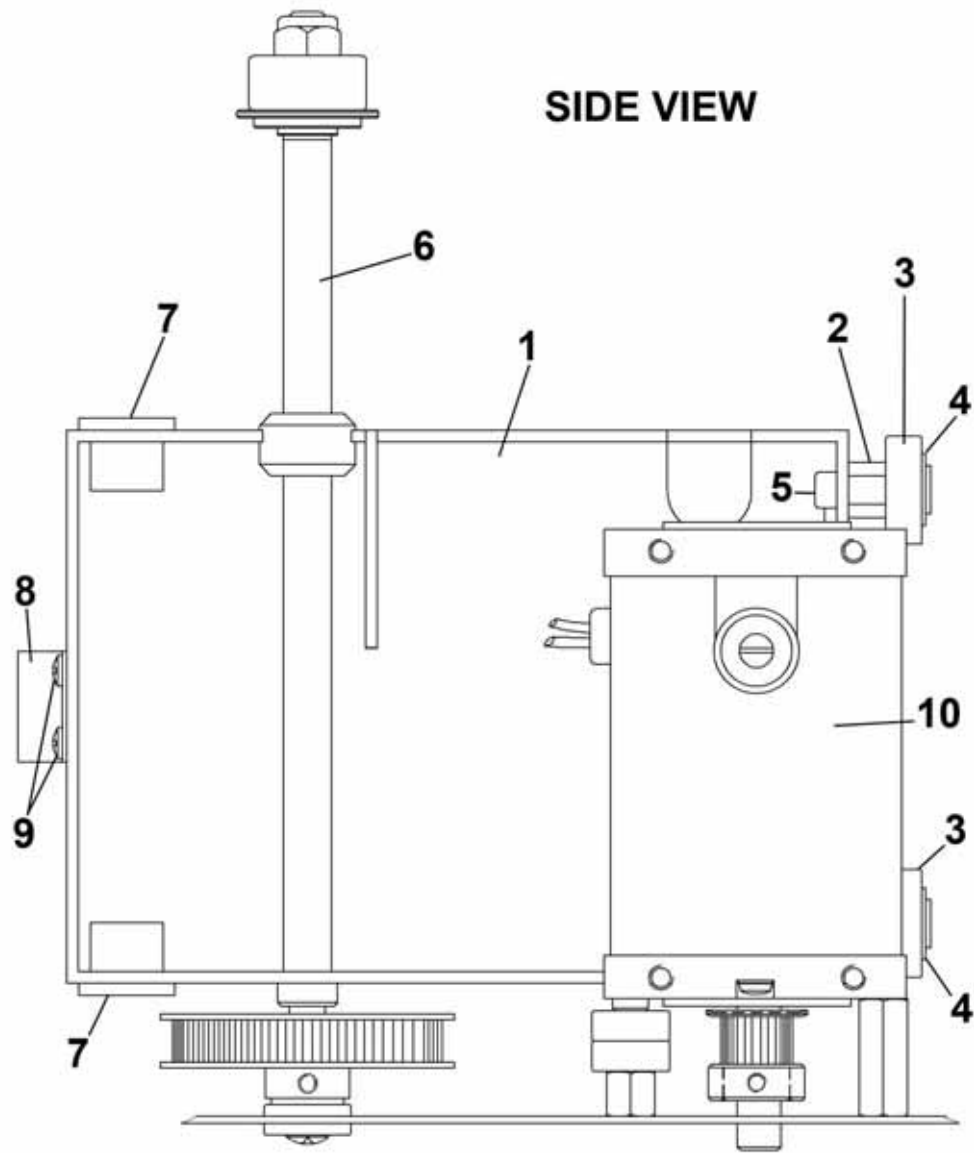


GROUP 1 MECHANICAL ASSEMBLY

KEY	PART NO.	DESCRIPTION	QTY
1	123-0017	SCREW, 10-32 x 1/4 TRUSS HD. SS	2
2	123-0063	WASHER, 5/8 OD x 9/32 ID x 1/16	4
3	123-0064	LOCK WASHER, 1/4	4
4	123-0182	SCREW, 1/4-20 x 3/4 SOC. HD. CAP, BLACK	4
5	123-0252	LOCK WASHER, #6 EXTERNAL TOOTH	6
6	123-0486	SCREW, 10-32 x 7/16 SOC. HD. CAP	1
7	123-0524	SCREW, 1/4-20 x 3/4 SOC. HD. CAP	2
8	123-0612	SCREW, 6-32 x 1/4, PAN HD. SS	3
9	123-0675	SCREW, 6-32 x 3/16 FL. HD. PH. UNDERCUT	1
10	123-0683	SCREW, 6-32 x 5/16 FL. HD. PH. UNDERCUT	1
11	123-0873	BELT, 160X037 BLACK	1
12	123-0978	SCREW, 4-40 x 3/16 PAN HD. SS	2
13	123-1135	SCREW, 6-32 x 1/4, PH TRUSS HD.	14
14	123-1136	SCREW, 8-32 x 1/4 TRUSS HD. PH. SS	4
15	123-1178	SCREW, 6-32 6-32 x 1/4 FL. HD. PH. UNDERCUT	6
16	123-1206	SCREW, 10-32 x 1/4 BTN. HD. SOC. CAP. SS, BLACK	8
17	123-1677	LOCK WASHER, #10 SS	1
18	123-2007	SCREW, 6-32 x 1/2 PAN HD. SS	4
19	123-2073	LOCK WASHER, 0.174 ID, 0.293 OD, SS	4
20	123-2451	SCREW, 10-32 x 5/16 BTN. HD. SOC. CAP SS	6
21	123-2605	RELAY, DPDT, 10A24V	2
22	123-2713	MAGNET	1
23	26-102-20	RELAY HOLDER ASSEMBLY	2
24	42-500-01	POWER INLET, GROUND	1
25	43-200-03	MAIN SIDE FRAME ASSEMBLY	1
26	43E-200-17	SIDE FRAME WELDMENT (<i>REAR COVER</i>)	1
27		ELECTRIC POST ASSEMBLY (SEE GROUP 4)	1
28	43-200-29	TOP COVER	1
29	43-200-37	PULLEY CLOSURE	1
30	43-201-04	BASE ASSEMBLY	1
31	43-201-15	SWIVEL CASTER	4
32		LIFTING PLATE ASSEMBLY (SEE GROUP 2, 2.1)	1

KEY	PART NO.	DESCRIPTION	QTY
33		MOTOR ASSEMBLY (SEE GROUP 2)	1
33.1	123-1623	BALL BEARING	
33.2	27-400-18	MOTOR PULLEY SUBASSEMBLY, 12 XL GROOVES	1
34		THREADED ROD ASSEMBLY (SEE GROUP 2.1)	1
34.1	123-2655	BEARING, 1-PC STEEL THRUST BALL FOR 1/2" SHAFT	1
34.2	43-101-22	HEAVY LOCK NUT	1
34.3	43-202-09	THREADED ROD FLANGE	1
35	43-202-18	MEDIA SENSOR BRACKET ASSEMBLY	1
36	43-202-23	LIFTING PLATE POST	1
37		REAR MEDIA GUIDE ASSEMBLY (SEE GROUP 3)	1
38	43-204-05	TABLE HOLDER WELDMENT	1
39	43-204-09	MEDIA TABLE WELDMENT	1
40	43-204-15	STACKER POSITION PLATE	1
41	43-510-04	"UP" SWITCH ASSEMBLY	1
42	43-510-05	"DOWN" SWITCH ASSEMBLY	1
43	43-510-23	M2 INTERFACE WIRE HARNESS	1
44	123-2717	POWER CORD (<i>STACKER TO M2</i>)	1
45	123-0635	POWER CORD, 115V (<i>STACKER TO WALL OUTLET</i>)	1
45	123-0735	POWER CORD, 220V (<i>STACKER TO WALL OUTLET</i>)	1
*	43-500-150	M2 INTERFACE CABLE	1
*Not Shown			

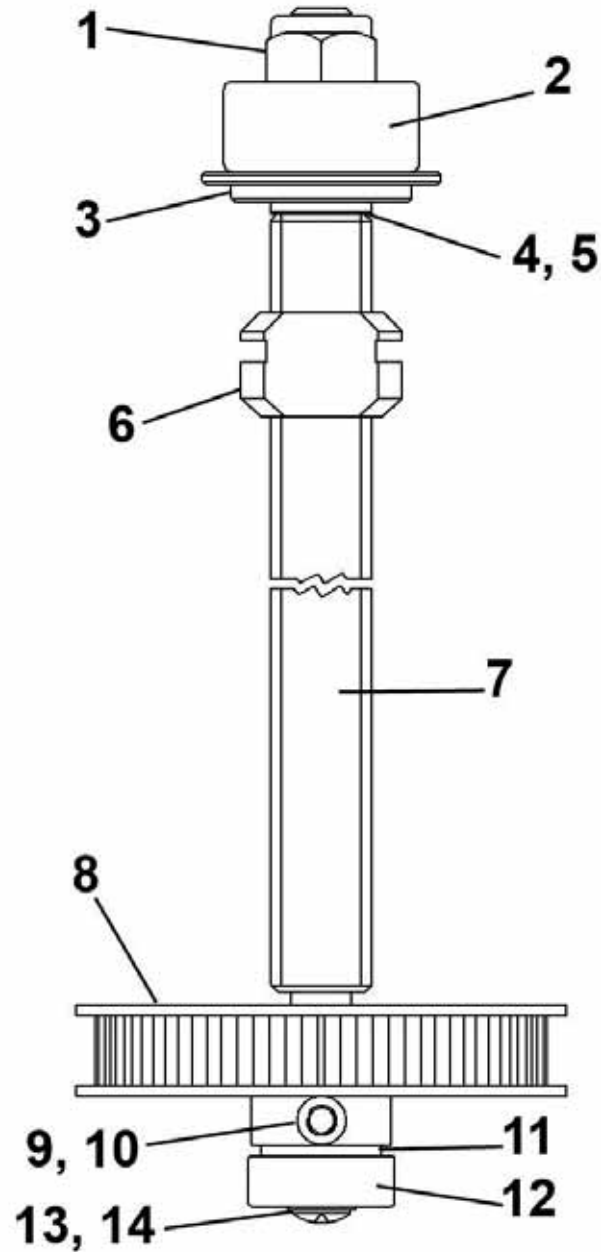
GROUP 2
MEDIA TABLE LIFT ASSEMBLY



**GROUP 2
MEDIA TABLE LIFT ASSEMBLY**

KEY	PART NO.	DESCRIPTION	QTY
1	43-202-11	LIFTING PLATE WELDMENT	1
2	43-202-16	BEARING STUD	2
3	123-0324	BALL BEARING, 1616-RS	2
4	123-1650	RETAINING RING, EXTERNAL 1/2 x 0.468 x 0.039	2
5	123-0524	SCREW, 1/4-20 x 3/4 SOC. HD. CAP (BLUE LOCTITE)	2
6		THREADED ROD ASSEMBLY (SEE GROUP 2.1)	1
7	43-202-25	LIFTING PLATE BUSHING (GREEN LOCTITE)	2
8	43-200-23	SENSOR TRIGGER	1
9	123-0461	SCREW, 6-32 x 3/16, PH RD. HD. SS	2
10		MOTOR ASSEMBLY	1
10.1	43-510-06	MOTOR ASSEMBLY	1
10.2	43-202-24	MOTOR STANDOFF ASSEMBLY	3
10.3	27-400-18	MOTOR PULLEY SUBASSEMBLY, 12XL GROOVES	1
10.4	123-0001	SET SCREW, 10-32 x 1/4	1
10.5	123-2250	RETAINING RING, EXTERNAL	1
10.6	43-202-13	MOTOR IDLER STANDOFF ASSEMBLY	1
10.7	123-1623	BEARING	2
11	123-0873	MOTOR DRIVE BELT	1

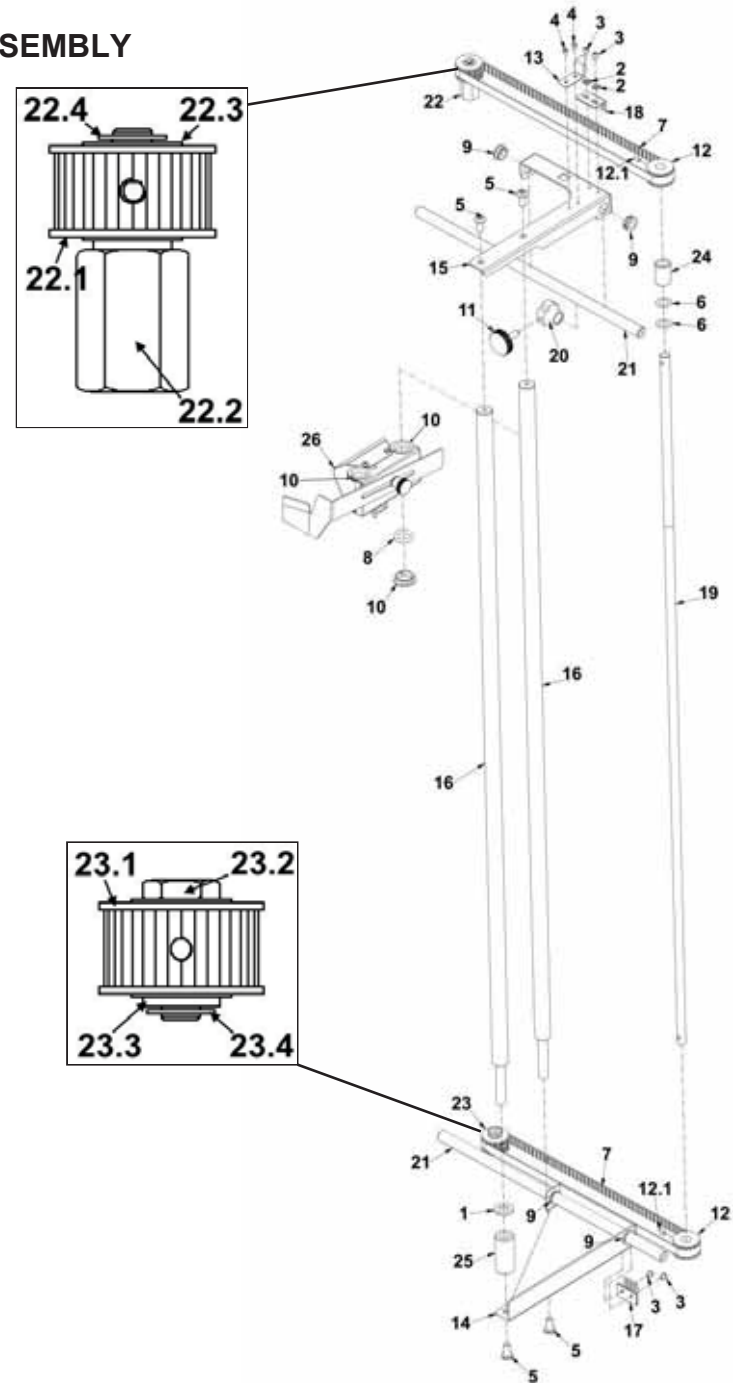
**GROUP 2.1
THREADED ROD ASSEMBLY**



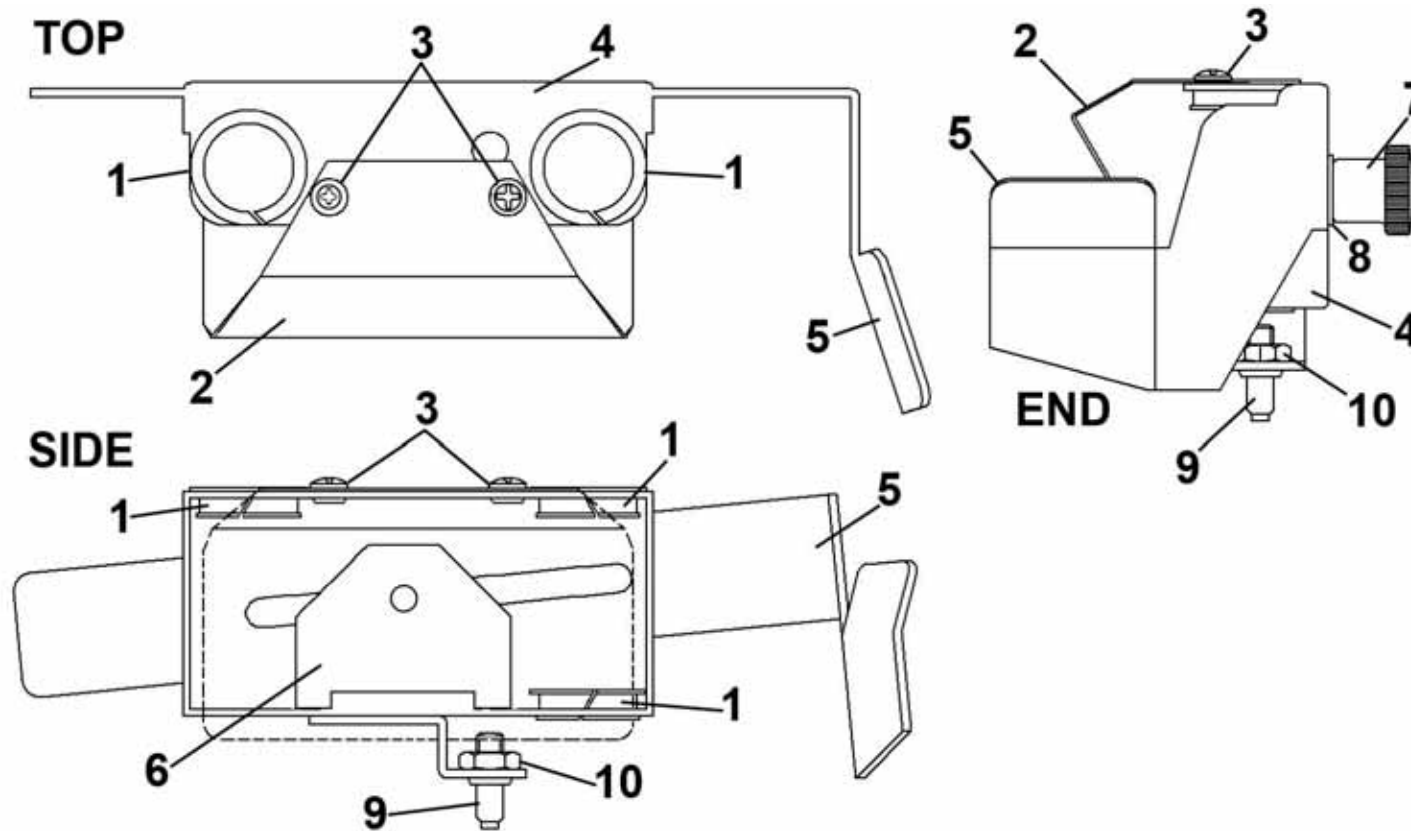
KEY	PART NO.	DESCRIPTION	QTY
1	43-101-22	HEAVY LOCK NUT (DO NOT OVERTIGHTEN)	1
2	123-2655	BEARING, 1-PC STEEL THRUST BALL FOR 1/2" SHAFT	1
3	43-202-09	THREADED ROD FLANGE	1
4	123-0705	BUSHING, OILITE (FF-520-9)	1
5	123-2011	SHIM, 3/8 x 5/8 x 0.005 THICK	1
6	43-101-10	NUT	1
7	43-202-08	THREADED ROD	1
8	43-101-29	PULLEY, 44 GROOVES XL	1
9	123-0237	STAR WASHER, #10 EXTERNAL	1
10	123-0004	SCREW, 10-32 x 5/8 SOC. HD.	1
11	123-0096	WASHER, PLASTIC 3/8 ID x 3/4 OD x 0.064	1
12	123-1623	BEARING	1
13	123-0148	WASHER, 7/16 OD x 0.0200 ID x 1/32	1
14	123-1205	SCREW, 8-32 x 1/4 BTN. HD. SOC. CAP. (BLUE LOCTITE)	1

GROUP 3 REAR MEDIA GUIDE ASSEMBLY

KEY	PART NO.	DESCRIPTION	QTY
1	123-0096	WASHER, NYLON, 3/8 x 3/4 x 0.064	1 2?
2	123-0252	LOCK WASHER, #6 EXTERNAL TOOTH	2
3	123-0461	SCREW, 6-32 x 3/16, PH RD. HD. SS	4
4	123-0978	SCREW, 4-40 x 3/16 PH PAN HD. SS	2
5	123-1442	SCREW, 1/4-20 x 1/2, SOC. BTN HD., SS	4
6	123-2011	SHIM, 3/8 x 5/8 x 0.005 THICK	2
7	123-2696	TIMING BELT	2
8	123-2697	O-RING	1
9	123-2700	THRUST BEARING, NYLON SNAP IN	4
10	123-2701	THRUST BEARING, NYLON SNAP IN	3
11	25-133-21	BRASS SCREW ASSEMBLY, 1/4-20	1
12	29-105-14	PULLEY, 16XL GROOVES	2
12.1	123-0322	SET SCREW, 8-32 x 1/4 HEX SOC. CUP PT.	2
13	43-203-12	POSITION INDICATOR	1
14	43-203-14	REAR MEDIA SUPPORT ARM, BOTTOM	1
15	43-203-16	REAR MEDIA SUPPORT ARM, TOP	1
16	43-203-17	REAR MEDIA SUPPORT	2
17	43-203-19	TIMING BELT LOCK WELDMENT, BOTTOM	1
18	43-203-22	TIMING BELT LOCK, TOP	1
19	43-203-23	REAR MEDIA SUPPORT SHAFT	1
20	43-203-24	MEDIA SUPPORT LOCK HUB ASSEMBLY	1
21	43-203-27	REAR MEDIA SUPPORT GUIDE	2
22	43-203-28	PULLEY STUD ASSEMBLY, TOP	1
22.1	43-203-35	PULLEY ASSEMBLY, 16 XL	1
22.2	43-203-29	PULLEY STUD, TOP	1
22.3	123-2670	WASHER (APPLY GREASE)	1
22.4	123-0081	1/4" TRUARC, #5133-25	1
23	43-203-30	PULLEY STUD ASSEMBLY, BOTTOM	1
23.1	43-203-35	PULLEY ASSEMBLY, 16 XL	1
23.2	43-203-31	PULLEY STUD, BOTTOM	1
23.3	123-2670	WASHER (APPLY GREASE)	1
23.4	123-0081	1/4" TRUARC, #5133-25	1
24	43-203-33	TOP PULLEY SPACER	1
25	43-203-34	REAR MEDIA SUPPORT HOLDER, BOTTOM	1
26	43-203-40	REAR MEDIA GUIDE BRACKET ASSEMBLY (SEE GROUP 3.1)	1

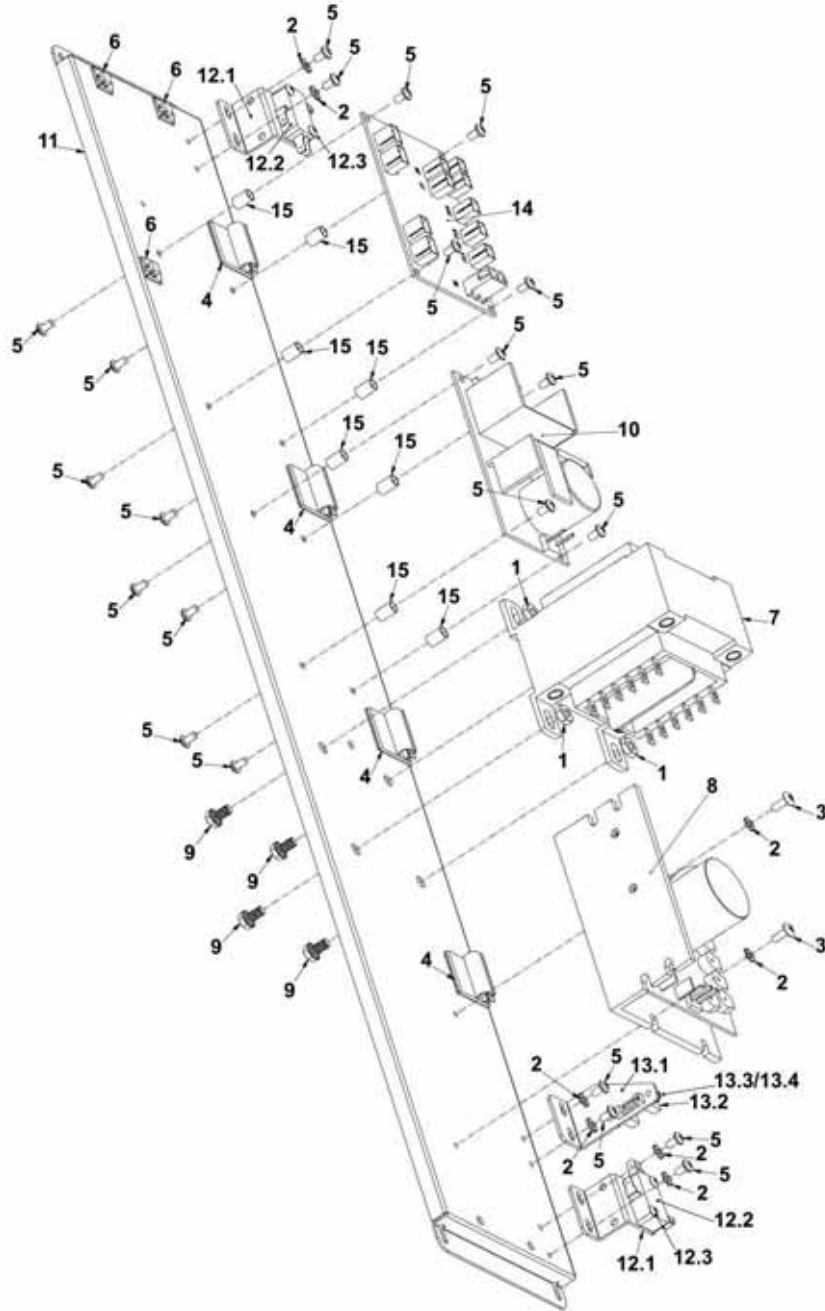


**GROUP 3.1
REAR MEDIA GUIDE BRACKET ASSEMBLY**



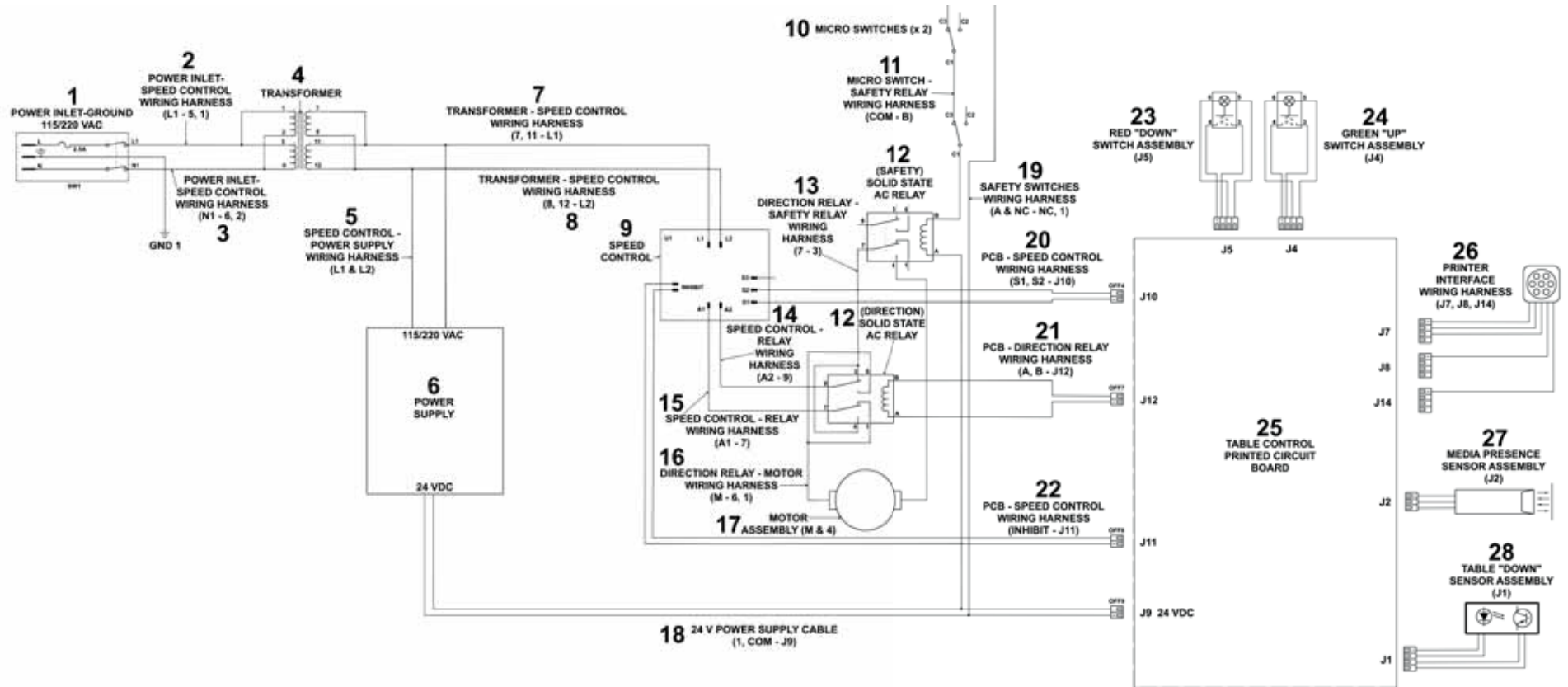
KEY	PART NO.	DESCRIPTION	QTY
1	123-2701	THRUST BEARING, NYLON SNAP IN	3
2	43-203-45	REAR MEDIA GUIDE	1
3	123-0127	SCREW, 6-32 x 1/8 PH PAN HD.	2
4	43-203-41	REAR MEDIA GUIDE BRACKET WELDMENT	1
5	43-203-43	SIDE MEDIA GUIDE BRACKET	1
6	43-203-44	REAR MEDIA GUIDE NUT	1
7	94-104-06	MEDIA BRACKET KNOB	1
8	123-0148	WASHER, 7/16 OD x 0.0200 ID x 1/32	1
9	123-1175	SET SCREW, 10-32 x 5/8 W/INSERT	1
10	123-0050	NUT	1

GROUP 4 ELECTRIC POST ASSEMBLY



KEY	PART NO.	DESCRIPTION	QTY
1	123-0050	HEX NUT, 10-32	4
2	123-0252	LOCK WASHER, #6 EXTERNAL TOOTH	8
3	123-0274	SCREW, 6-32 x 3/8 TRUSS HD. PH. SS	2
4	123-0609	CABLE HOLDER, 1/4"	4
5	123-0612	SCREW, 6-32 x 1/4 PAN HD. SS	22
6	123-0945	CABLE TIE MOUNT	3
7	123-1562	TRANSFORMER, A41-130-230	1
8	123-1651	SPEED CONTROL	1
9	123-1761	SCREW, 10-32 x 3/8 HEX HD. FINE THREAD	4
10	123-2680	POWER SUPPLY	1
11	43-200-20	ELECTRIC POST ASSEMBLY	1
12		LIMIT SWITCH ASSEMBLY (TOP & BOTTOM)	2
12.1	43-200-21	LIMIT SWITCH BRACKET ASSEMBLY	2
12.2	123-0988	MICRO SWITCH	2
12.3	123-2380	SCREW, 4-40 x 1/2 TRUSS HD. PH, SS	4
13		SENSOR BRACKET ASSEMBLY	1
13.1	43-200-22	SENSOR BRACKET	1
13.2	43-510-21	"DOWN" POSITION SENSOR ASSEMBLY	1
13.3	123-0976	SCREW, 4-40 x 1/4 PH, PAN HD.	2
13.4	123-0261	STAR WASHER, #4 EXTERNAL	2
14	43-510-35	CONTROL BOARD	1
15	95-100-32	PC BOARD SUPPORTS	8

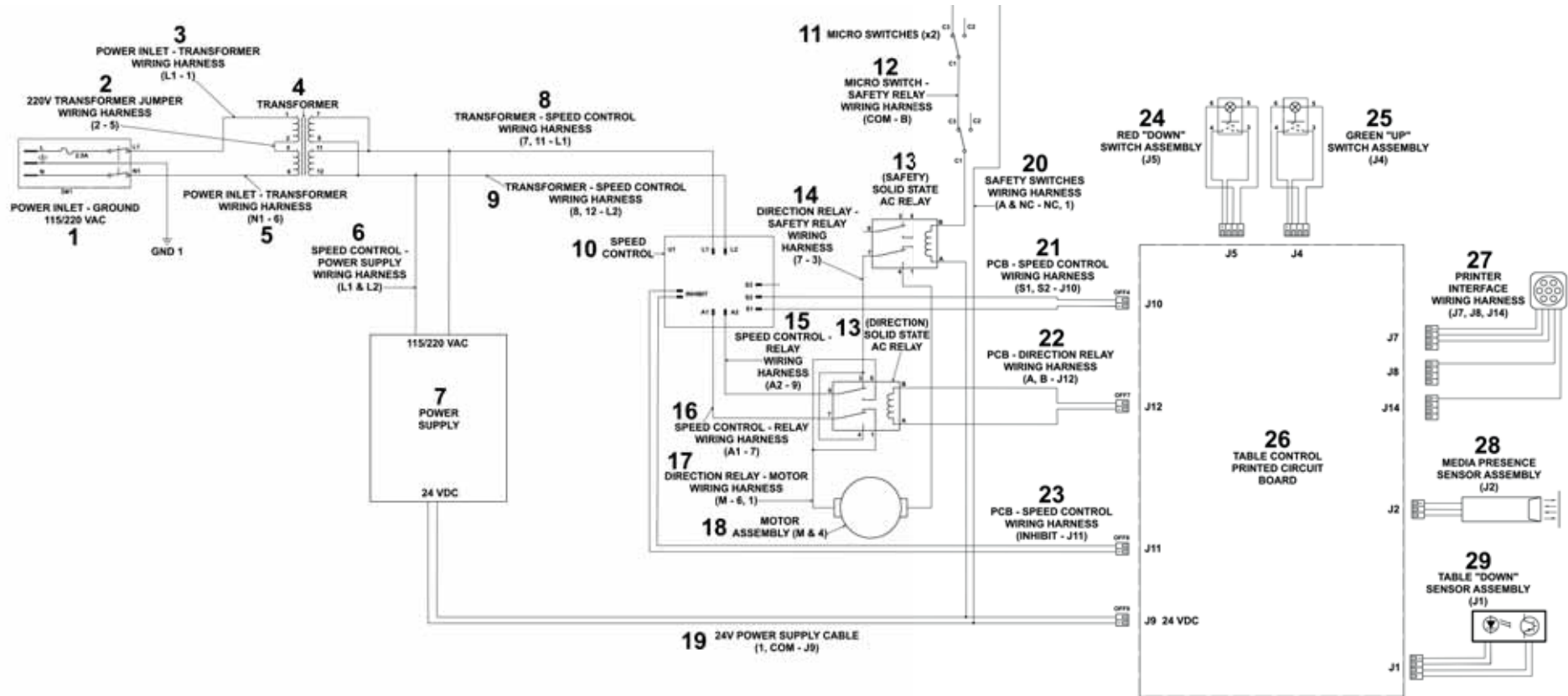
GROUP 5 STACKER ELECTRICAL – 115V



**GROUP 5
STACKER ELECTRICAL – 115V**

KEY	PART NO.	DESCRIPTION	QTY
1	42-500-01	POWER INLET - GROUND	1
2	43-510-01	POWER INLET-TRANSFORMER WIRING HARNESS (L1 – 5, 1)	1
3	43-510-02	POWER INLET-TRANSFORMER WIRING HARNESS (N1 – 6, 2)	1
4	123-1562	115V-220V TRANSFORMER, A41-130-230	1
5	43-510-03	SPEED CONTROL – POWER SUPPLY WIRING HARNESS (L1 & L2)	1
6	123-2680	POWER SUPPLY	1
7	43-511-03	TRANSFORMER – SPEED CONTROL WIRING HARNESS, (7, 11 – L1)	1
8	43-511-04	TRANSFORMER – SPEED CONTROL WIRING HARNESS, (8, 12 – L2)	1
9	123-1651	SPEED CONTROL	1
10	123-0988	MICRO SWITCH (<i>TOP & BOTTOM LIMIT SWITCHES</i>)	2
11	43-510-17	MICRO SWITCH – SAFETY RELAY WIRING HARNESS (COM – B)	1
12	123-2605	SOLID STATE AC RELAY (<i>SAFETY/RH & DIRECTION/LH</i>)	2
13	43-510-15	DIRECTION RELAY – SAFETY RELAY WIRING HARNESS (3, 4 – 7)	1
14	43-510-08	SPEED CONTROL – DIRECTION RELAY WIRING HARNESS (A2 – 9)	1
15	43-510-07	SPEED CONTROL – DIRECTION RELAY WIRING HARNESS (A1 – 7)	1
16	43-510-14	DIRECTION RELAY – MOTOR WIRING HARNESS (M – 6, 1)	1
17	43-510-06	MOTOR ASSEMBLY (M & 4)	1
18	43-510-09	24V POWER SUPPLY CABLE (1, COM – J9)	1
19	43-510-16	SAFETY SWITCHES WIRING HARNESS, TOP & BOTTOM (A & NC – NC, 1)	1
20	43-510-10	PCB – SPEED CONTROL WIRING HARNESS (S1, S2 – J10)	1
21	43-510-12	PCB – DIRECTION RELAY WIRING HARNESS (A, B – J12)	1
22	43-510-11	PCB – SPEED CONTROL WIRING HARNESS (INHIBIT – J11)	1
23	43-510-05	RED (DOWN) SWITCH ASSEMBLY (J5)	1
24	43-510-04	GREEN (UP) SWITCH ASSEMBLY (J4)	1
25	43-510-35	TABLE CONTROL PC BOARD	1
26	43-510-23	M2 INTERFACE WIRING HARNESS (J7, J14, J8)	1
27	43-510-22	TABLE UP POSITION SENSOR ASSEMBLY (J2)	1
28	43-510-21	TABLE DOWN POSITION SENSOR ASSEMBLY (J1)	1
29	123-2717	POWER CORD, (<i>CONNECTS STACKER TO M2 PRINTER</i>)	1
30	123-0635	POWER CORD, 115V, (<i>CONNECTS STACKER TO WALL OUTLET</i>)	1
*	43-500-150	M2 PRINTER – STACKER INTERFACE CABLE	1
*NOT SHOWN			

GROUP 5A STACKER ELECTRICAL – 220V



**GROUP 5A
STACKER ELECTRICAL – 220V**

KEY	PART NO.	DESCRIPTION	QTY
1	42-500-01	POWER INLET - GROUND	1
2	20-500-107	220V TRANSFORMER JUMPER WIRING HARNESS (2 – 5)	1
3	43-511-01	POWER INLET – TRANSFORMER WIRING HARNESS, 220V (L1 – 1)	1
4	123-1562	220V TRANSFORMER, A41-130-230	1
5	43-511-02	POWER INLET – TRANSFORMER WIRING HARNESS, 220V (N1 – 6)	1
6	43-510-03	SPEED CONTROL – POWER SUPPLY WIRING HARNESS (L1 & L2)	1
7	123-2680	POWER SUPPLY	1
8	43-511-03	TRANSFORMER – SPEED CONTROL WIRING HARNESS, 220V (7, 11 – L1)	1
9	43-511-04	TRANSFORMER – SPEED CONTROL WIRING HARNESS, 220V (8, 12 – L2)	1
10	123-1651	SPEED CONTROL	1
11	123-0988	MICRO SWITCH (<i>TOP & BOTTOM LIMIT SWITCHES</i>)	2
12	43-510-17	MICRO SWITCH – SAFETY RELAY WIRING HARNESS (COM – B)	1
13	123-2605	SOLID STATE AC RELAY (<i>SAFETY/RH & DIRECTION/LH</i>)	2
14	43-510-15	DIRECTION RELAY – SAFETY RELAY WIRING HARNESS (3, 4 – 7)	1
15	43-510-08	SPEED CONTROL – DIRECTION RELAY WIRING HARNESS (A2 – 9)	1
16	43-510-07	SPEED CONTROL – DIRECTION RELAY WIRING HARNESS (A1 – 7)	1
17	43-510-14	DIRECTION RELAY – MOTOR WIRING HARNESS (6, 1 – M)	1
18	43-510-06	MOTOR ASSEMBLY (M & 4)	1
19	43-510-09	24V POWER SUPPLY CABLE (1 & COM – J9)	1
20	43-510-16	SAFETY SWITCHES WIRING HARNESS, TOP & BOTTOM (A & NC – NC, 1)	1
21	43-510-10	PCB – SPEED CONTROL WIRING HARNESS (S1, S2 – J10)	1
22	43-510-12	PCB – DIRECTION RELAY WIRING HARNESS (A, B – J12)	1
23	43-510-11	PCB – SPEED CONTROL WIRING HARNESS (INHIBIT – J11)	1
24	43-510-05	RED (DOWN) SWITCH ASSEMBLY (J5)	1
25	43-510-04	GREEN (UP) SWITCH ASSEMBLY (J4)	1
26	43-510-35	TABLE CONTROL PC BOARD	1
27	43-510-23	M2 INTERFACE WIRING HARNESS (J7, J14, J8)	1
28	43-510-22	MEDIA PRESENCE SENSOR ASSEMBLY (J2)	1
29	43-510-21	TABLE DOWN POSITION SENSOR ASSEMBLY (J1)	1
30	123-2717	POWER CORD, (<i>CONNECTS STACKER TO M2 PRINTER</i>)	1
31	123-0735	POWER CORD, 220V, (<i>CONNECTS STACKER TO WALL OUTLET</i>)	1
*	43-500-150	M2 PRINTER – STACKER INTERFACE CABLE	1
*NOT SHOWN			

NORMAL WEAR & SPARE PARTS

NORMAL WEAR PARTS

PART NO.	DESCRIPTION	QTY PER PRINTER
123-0873	MOTOR DRIVE BELT	1
123-2696	TIMING BELT (<i>UPPER & LOWER</i>)	2
43-510-22	"UP" POSITION SENSOR ASSEMBLY	1
43-510-21	"DOWN" POSITION SENSOR ASSEMBLY	1
123-0988	MICRO SWITCH (<i>TOP & BOTTOM LIMIT SWITCHES</i>)	2

RECOMMENDED SPARE PARTS

PART NO.	DESCRIPTION	QTY PER PRINTER
123-1398	2.5 AMP SLO-BLO FUSE (<i>POWER INLET ASSEMBLY</i>) (NOTE: SPARE FUSE SUPPLIED IN FUSE HOLDER)	1
127-2717	POWER CORD (<i>CONNECTS STACKER TO M2</i>)	1
123-0635	POWER CORD, 115V, (<i>CONNECTS STACKER TO WALL OUTLET</i>)	1
123-0735	POWER CORD, 220V, (<i>CONNECTS STACKER TO WALL OUTLET</i>)	1
43-500-150	M2 PRINTER – STACKER INTERFACE CABLE	1
43-510-06	MOTOR ASSEMBLY	1
123-2605	RELAY	2
123-1651	SPEED CONTROL	1
123-2680	POWER SUPPLY	1
43-510-35	CONTROL PC BOARD	1

INDEX

PART NO.	GROUP	KEY	PART NO.	GROUP	KEY	PART NO.	GROUP	KEY
123-0001	2	10.4	123-0988	5A	11	25-133-21	3	11
123-0004	2.1	10	123-1135	1	13	26-102-20	1	23
123-0017	1	1	123-1136	1	14	27-400-18	1	33.2
123-0050	3.1	10	123-1175	3.1	9	27-400-18	2	10.3
123-0050	4	1	123-1178	1	15	29-105-14	1	33
123-0063	1	2	123-1205	2.1	14	29-105-14	3	12
123-0064	1	3	123-1206	1	16	42-500-01	1	24
123-0081	3	22.4	123-1442	3	5	42-500-01	5	1
123-0081	3	23.4	123-1562	4	7	42-500-01	5A	1
123-0096	2.1	11	123-1562	5	4	43-101-10	2.1	6
123-0096	3	1	123-1562	5A	4	43-101-22	1	34.2
123-0127	3.1	3	123-1623	1	33.1	43-101-22	2.1	1
123-0148	2.1	13	123-1623	2	10.7	43-101-29	2.1	8
123-0148	3.1	8	123-1623	2.1	12	43-200-03	1	25
123-0182	1	4	123-1650	2	4	43-200-20	4	11
123-0237	2.1	9	123-1651	4	8	43-200-21	4	12.1
123-0252	1	5	123-1651	5	9	43-200-22	4	13.1
123-0252	3	2	123-1651	5A	10	43-200-23	2	8
123-0252	4	2	123-1677	1	17	43-200-29	1	28
123-0261	4	13.4	123-1761	4	9	43-200-37	1	29
123-0274	4	3	123-2007	1	18	43-201-04	1	30
123-0322	1	34	123-2011	2.1	5	43-201-15	1	31
123-0322	3	12.1	123-2011	3	6	43-202-08	2.1	7
123-0324	2	3	123-2073	1	22	43-202-09	1	34.3
123-0461	1	36	123-2250	2	10.5	43-202-09	2.1	3
123-0461	2	9	123-2380	4	12.3	43-202-11	2	1
123-0461	3	3	123-2451	1	17	43-202-13	2	10.6
123-0461	3	18.1	123-2605	5	12	43-202-16	2	2
123-0486	1	6	123-2605	5A	13	43-202-18	1	35
123-0524	1	7	123-2655	1	34.1	43-202-23	1	36
123-0524	2	5	123-2655	2.1	2	43-202-24	2	10.2
123-0609	4	4	123-2661	1	32	43-202-25	2	7
123-0612	1	8	123-2661	3	5	43-203-12	1	6
123-0612	4	5	123-2670	3	22.3	43-203-12	3	13
123-0635	1	45	123-2670	3	23.3	43-203-14	1	30
123-0635	5	30	123-2680	4	10	43-203-14	3	14
123-0675	1	9	123-2680	5	6	43-203-16	1	8
123-0683	1	10	123-2680	5A	7	43-203-16	3	15
123-0705	2.1	4	123-2696	3	7	43-203-17	1	10
123-0735	1	45	123-2697	3	8	43-203-17	3	16
123-0735	5A	31	123-2700	3	9	43-203-19	1	35
123-0873	1	11	123-2701	3	10	43-203-19	3	17
123-0873	2	11	123-2701	3.1	1	43-203-22	3	18
123-0945	4	6	123-2713	1	18	43-203-23	3	19
123-0976	4	13.3	123-2717	1	44	43-203-24	3	20
123-0978	1	12	123-2717	5	29	43-203-27	1	4
123-0978	3	4	123-2717	5A	30	43-203-27	3	21
123-0988	4	12.2	20-500-107	5A	2	43-203-28	3	22
123-0988	5	10	25-133-21	1	5	43-203-29	3	22.2

INDEX

PART NO.	GROUP	KEY	PART NO.	GROUP	KEY
43-203-30	1	31	43-510-16	5A	20
43-203-30	3	23	43-510-17	5	11
43-203-31	3	23.2	43-510-17	5A	12
43-203-33	3	24	43-510-21	4	13.2
43-203-34	3	25	43-510-21	5	28
43-203-35	3	22.1	43-510-21	5A	29
43-203-35	3	23.1	43-510-22	5	27
43-203-40	1	13	43-510-22	5A	28
43-203-40	3	26	43-510-23	1	43
43-203-41	3.1	4	43-510-23	5	23
43-203-43	3.1	5	43-510-23	5A	27
43-203-44	3.1	6	43-510-35	4	14
43-203-45	3.1	2	43-510-35	5	25
43-204-05	1	38	43-510-35	5A	26
43-204-09	1	39	43-511-01	5A	3
43-204-15	1	40	43-511-02	5A	5
43-500-150	1	--	43-511-03	5	7
43-500-150	5	--	43-511-03	5A	8
43-500-150	5A	--	43-511-04	5	8
43-510-01	5	2	43-511-04	5A	9
43-510-02	5	3	43E-200-17	1	26
43-510-03	5	5	94-104-06	3.1	7
43-510-03	5A	6	95-100-32	4	15
43-510-04	1	41			
43-510-04	5	24			
43-510-04	5A	25			
43-510-05	1	42			
43-510-05	5	23			
43-510-05	5A	24			
43-510-06	2	10.1			
43-510-06	5	17			
43-510-06	5A	18			
43-510-07	5	15			
43-510-07	5A	16			
43-510-08	5	14			
43-510-08	5A	15			
43-510-09	5	18			
43-510-09	5A	19			
43-510-10	5	17			
43-510-10	5A	21			
43-510-11	5	22			
43-510-11	5A	23			
43-510-12	5	21			
43-510-12	5A	22			
43-510-14	5	16			
43-510-14	5A	17			
43-510-15	5	13			
43-510-15	5A	14			
43-510-16	5	19			

Copyright 2016 All rights reserved
01/14/2016

Part Number: 100-RTS Rev C